



**Economic Development
Alliance For Business**

*Building Resources,
Businesses & Quality Jobs*

JAN 2001- MAR 2004

Industry Analysis

East Bay

(Alameda &

Contra Costa

Counties)

Data Source: California Employment Development Department, LMID

Analysis by: Economic Development Alliance for Business

Publish Date: July 18, 2005



June 8, 2005

RE: IMPORTANT INFORMATION REGARDING THE INDUSTRY DATA IN THE FOLLOWING TABLES AND CHARTS

FROM: Keith Sutton, Business Development Director, EDAB

The charts and data tables herein are derived by the Economic Development Alliance for Business from California Employment Development Department, Labor Market Information Division data (ES202). It is collected from the Unemployment Insurance Tax forms filed by businesses, and does not distinguish between full time and part time employment.

Please remember that this data (as does all data) has its peculiarities. EDD is primarily concerned about getting the County the business is located in right. EDD is less concerned about the local business address, though they tried to improve this data by adding a second address block. The business address is supposed to be included as well as the address of the person (owner, CPA, headquarters, etc) completing the form. Despite the second address block, some businesses still don't have a local address listed, so data will be less accurate at the city level than it is at the county.

Even the County numbers are somewhat less than those reported by EDD monthly, so this analysis should not be used to identify exactly how many businesses and employee are in an industry – the real value of this industry data is in its increasing and decreasing trends and the comparative strengths of the industries in the East Bay, Alameda and Contra Costa Counties and the individual cities.

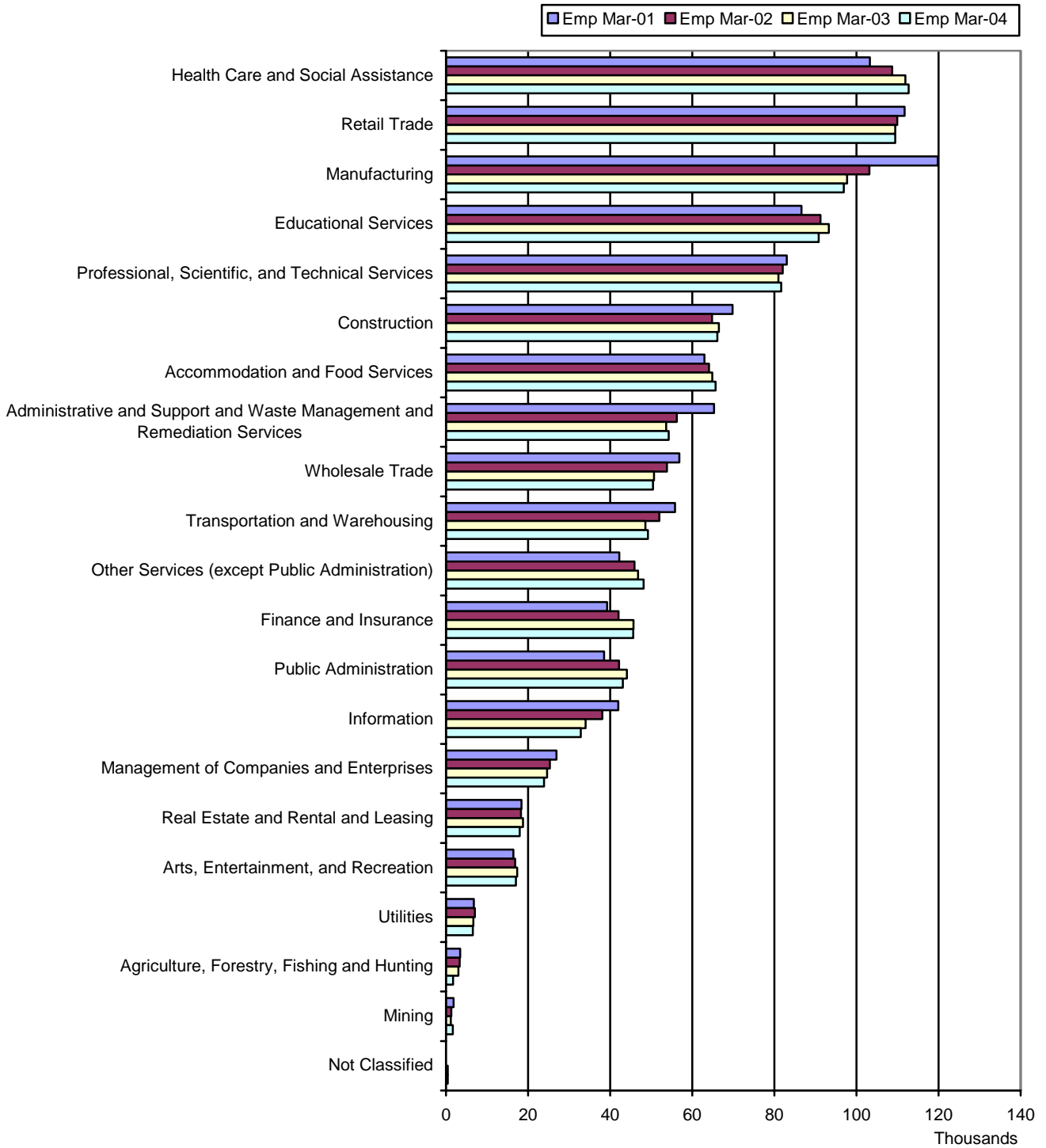
The non-county (22,140 in Alameda and Contra Costa County) make up 23.9% of our current EDD database (which has 92,453 businesses in it with 1,020,355 employees in 3/2003), and 19% have only Sacramento addresses. They include some schools, CalTrans, state police and a few other State government related entities. But the majority are private, in-home businesses with one or no full-time employees that apparently don't have a business address. These in-home businesses, mostly NAICS 81411, are about 23% of the total number of businesses, but they employ only 12,492 - about 1.2% of the total.

Therefore about 4% of the businesses (1,412 with the Contra Costa County Code – 013, and 2,365 with the Alameda County code – 001) in the total database without a local address that are of potential interest to us.

Beginning with 2001, EDD began using the new NAICS codes which are designed to reflect the new industries and types of businesses in the current economy. You can find a complete listing of the codes and their descriptions at <http://www.census.gov/epcd/www/naics.html> .

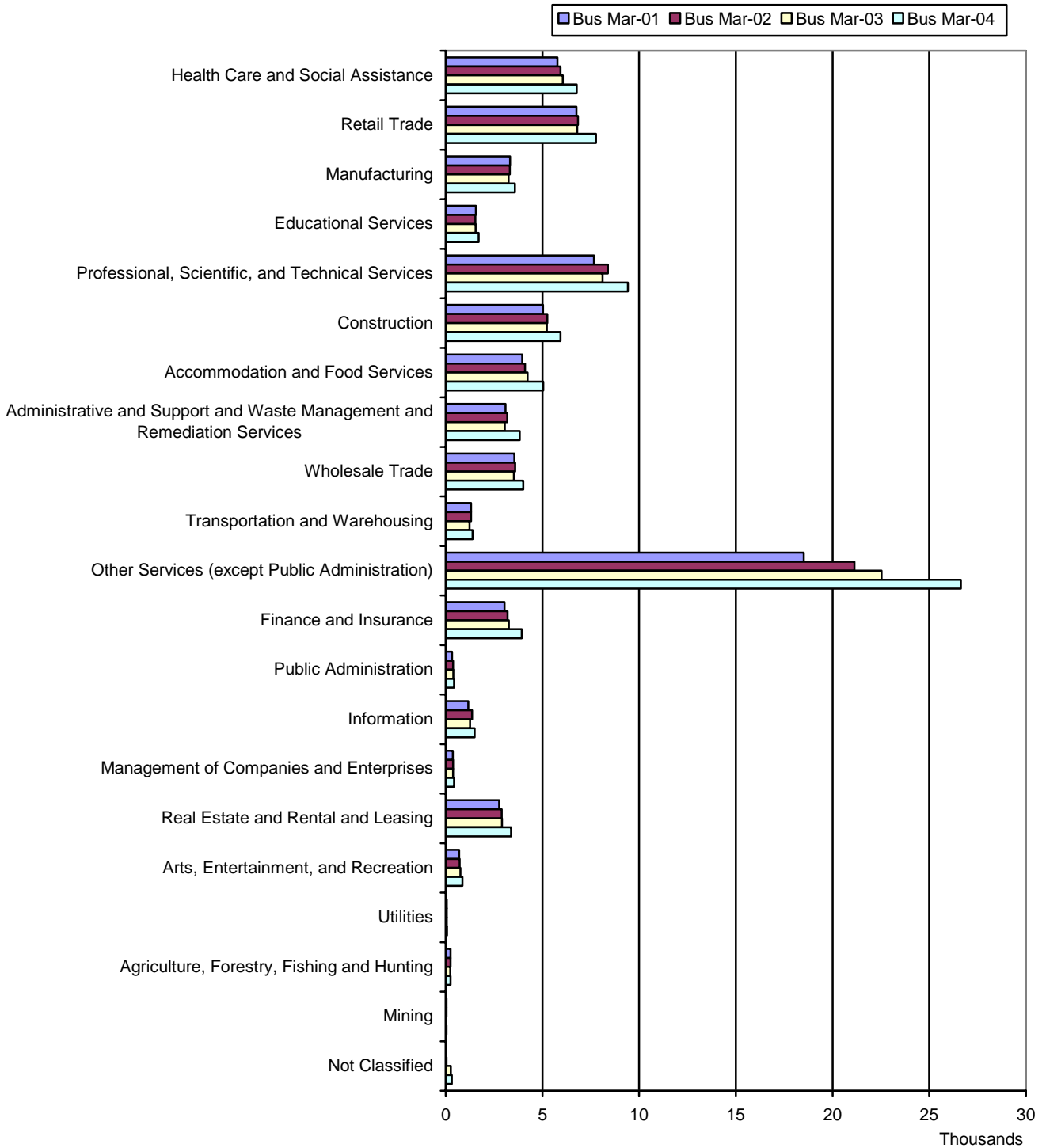
A data table is placed on the page behind each chart.

East Bay Employment by Industry (2001-2004)



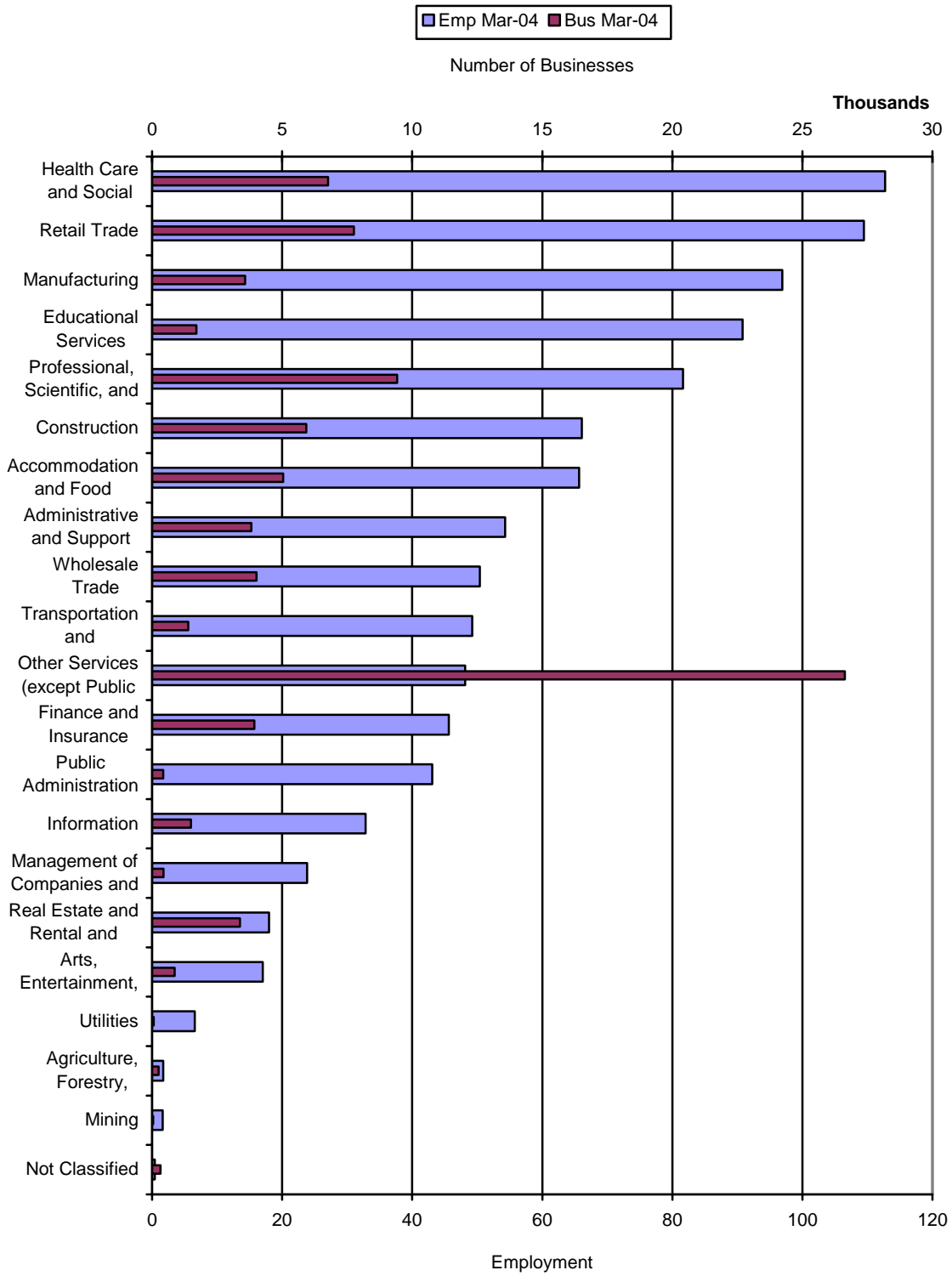
East Bay Employment by Industry				
Description	Emp Mar-01	Emp Mar-02	Emp Mar-03	Emp Mar-04
Health Care and Social Assistance	103,279	108,684	111,924	112,739
Retail Trade	111,699	109,943	109,472	109,472
Manufacturing	119,843	103,162	97,719	96,916
Educational Services	86,623	91,222	93,290	90,822
Professional, Scientific, and Technical Services	83,017	82,046	80,995	81,644
Construction	69,834	64,842	66,451	66,093
Accommodation and Food Services	62,963	64,050	64,866	65,671
Administrative and Support and Waste Management and Remediation Services	65,282	56,216	53,629	54,274
Wholesale Trade	56,861	53,815	50,706	50,419
Transportation and Warehousing	55,775	51,971	48,603	49,220
Other Services (except Public Administration)	42,236	45,947	46,808	48,162
Finance and Insurance	39,239	42,009	45,703	45,619
Public Administration	38,508	42,152	44,078	43,063
Information	41,996	38,091	34,018	32,820
Management of Companies and Enterprises	26,913	25,278	24,620	23,859
Real Estate and Rental and Leasing	18,424	18,265	18,789	17,972
Arts, Entertainment, and Recreation	16,437	16,861	17,325	17,009
Utilities	6,820	7,042	6,673	6,549
Agriculture, Forestry, Fishing and Hunting	3,438	3,357	3,046	1,710
Mining	1,835	1,298	1,201	1,648
Not Classified	9	55	439	407
Grand Total	1,051,031	1,026,306	1,020,355	1,016,088

East Bay Number of Businesses by Industry (2001-2004)



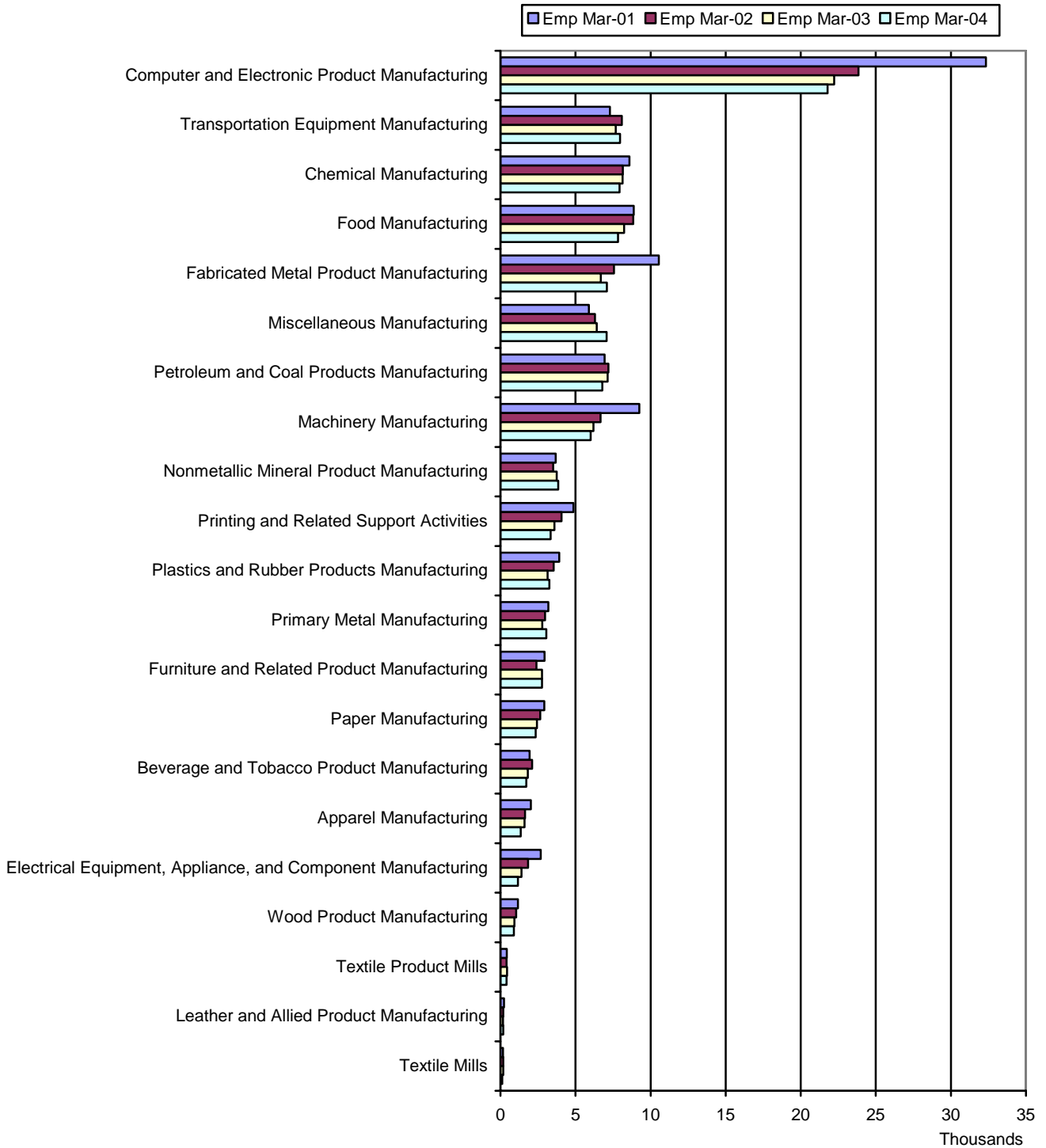
East Bay Number of Businesses by Industry				
Description	Bus Mar-01	Bus Mar-02	Bus Mar-03	Bus Mar-04
Health Care and Social Assistance	5,779	5,940	6,052	6,769
Retail Trade	6,762	6,840	6,799	7,764
Manufacturing	3,325	3,320	3,253	3,575
Educational Services	1,558	1,538	1,540	1,705
Professional, Scientific, and Technical Services	7,669	8,386	8,113	9,417
Construction	5,037	5,255	5,227	5,928
Accommodation and Food Services	3,951	4,103	4,230	5,039
Administrative and Support and Waste Management and Remediation Services	3,086	3,189	3,058	3,819
Wholesale Trade	3,555	3,594	3,521	4,015
Transportation and Warehousing	1,315	1,304	1,229	1,387
Other Services (except Public Administration)	18,511	21,125	22,536	26,630
Finance and Insurance	3,041	3,190	3,267	3,930
Public Administration	323	376	389	432
Information	1,170	1,367	1,257	1,494
Management of Companies and Enterprises	368	375	386	434
Real Estate and Rental and Leasing	2,770	2,889	2,913	3,374
Arts, Entertainment, and Recreation	693	720	756	871
Utilities	51	55	57	66
Agriculture, Forestry, Fishing and Hunting	248	248	235	250
Mining	33	33	32	37
Not Classified	3	38	265	319
Grand Total	69,248	73,885	75,115	87,255

East Bay Number of Businesses and Employment by Industry (2001-2004)



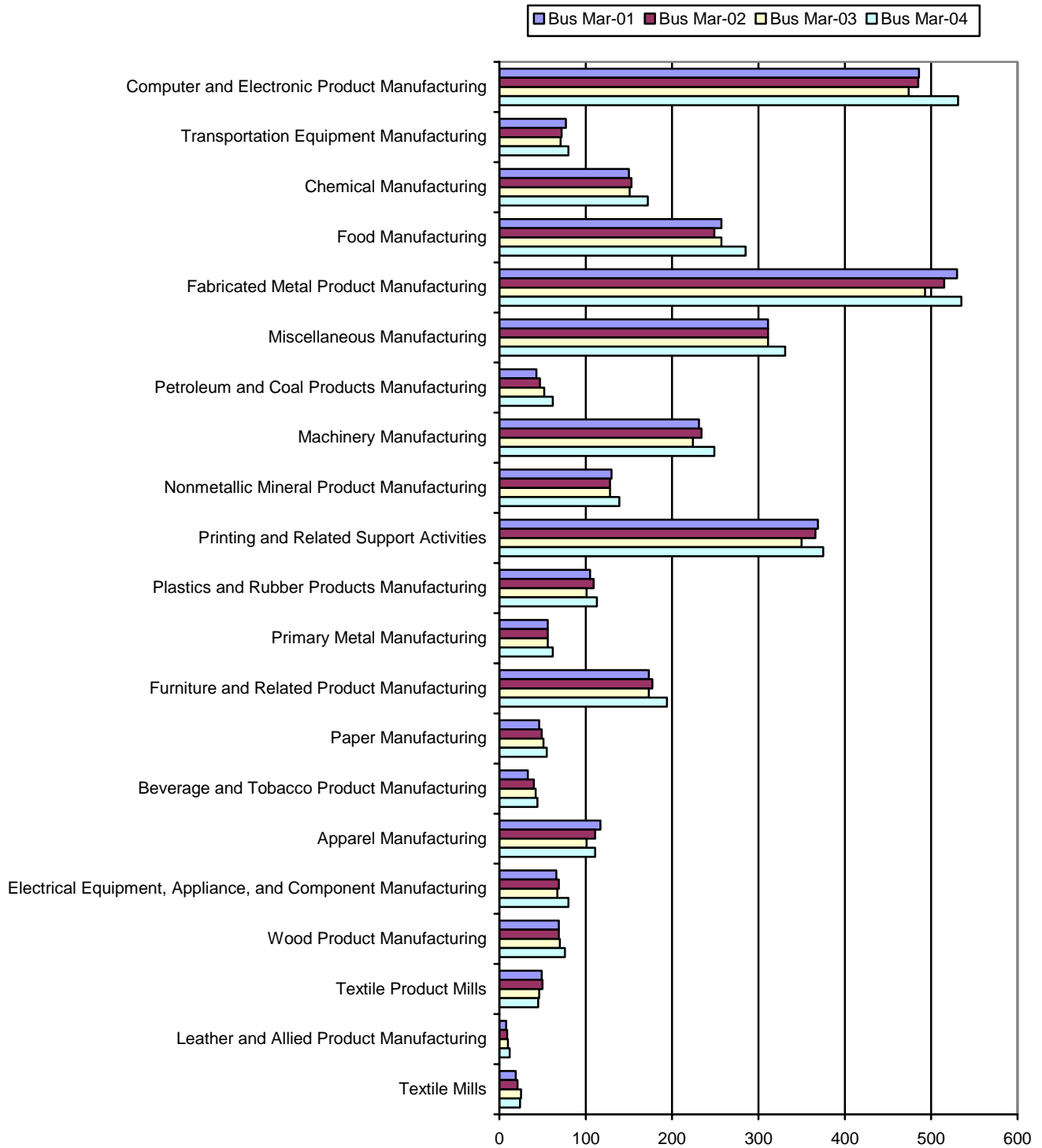
East Bay Number of Businesses and Employment by Industry		
Description	Emp Mar-04	Bus Mar-04
Health Care and Social Assistance	112,739	6,769
Retail Trade	109,472	7,764
Manufacturing	96,916	3,575
Educational Services	90,822	1,705
Professional, Scientific, and Technical Services	81,644	9,417
Construction	66,093	5,928
Accommodation and Food Services	65,671	5,039
Administrative and Support and Waste Management and Remediation Services	54,274	3,819
Wholesale Trade	50,419	4,015
Transportation and Warehousing	49,220	1,387
Other Services (except Public Administration)	48,162	26,630
Finance and Insurance	45,619	3,930
Public Administration	43,063	432
Information	32,820	1,494
Management of Companies and Enterprises	23,859	434
Real Estate and Rental and Leasing	17,972	3,374
Arts, Entertainment, and Recreation	17,009	871
Utilities	6,549	66
Agriculture, Forestry, Fishing and Hunting	1,710	250
Mining	1,648	37
Not Classified	407	319
Grand Total	1,016,088	87,255

East Bay Manufacturing Employment by Industry (2001-2004)



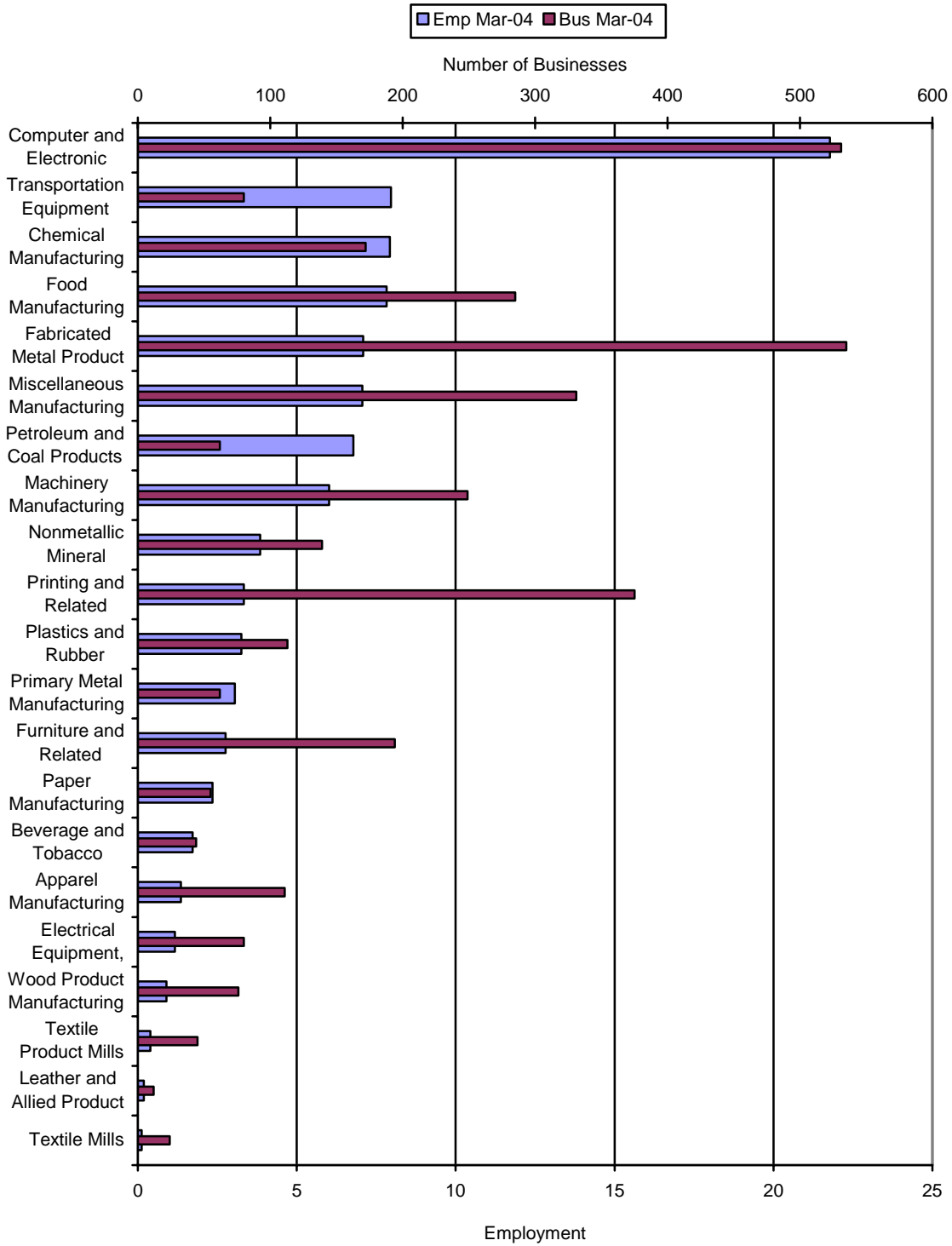
East Bay Manufacturing Employment by Industry				
Description	Emp Mar-01	Emp Mar-02	Emp Mar-03	Emp Mar-04
Computer and Electronic Product Manufacturing	32,336	23,841	22,223	21,780
Transportation Equipment Manufacturing	7,293	8,087	7,678	7,963
Chemical Manufacturing	8,583	8,149	8,139	7,931
Food Manufacturing	8,876	8,849	8,242	7,830
Fabricated Metal Product Manufacturing	10,548	7,566	6,676	7,090
Miscellaneous Manufacturing	5,894	6,294	6,414	7,064
Petroleum and Coal Products Manufacturing	6,928	7,185	7,130	6,782
Machinery Manufacturing	9,253	6,658	6,193	6,015
Nonmetallic Mineral Product Manufacturing	3,680	3,506	3,745	3,850
Printing and Related Support Activities	4,854	4,062	3,601	3,336
Plastics and Rubber Products Manufacturing	3,916	3,552	3,136	3,259
Primary Metal Manufacturing	3,185	2,963	2,790	3,051
Furniture and Related Product Manufacturing	2,941	2,401	2,764	2,761
Paper Manufacturing	2,927	2,647	2,429	2,350
Beverage and Tobacco Product Manufacturing	1,934	2,106	1,821	1,721
Apparel Manufacturing	2,025	1,642	1,601	1,354
Electrical Equipment, Appliance, and Component Manufacturing	2,691	1,834	1,403	1,165
Wood Product Manufacturing	1,167	1,049	930	902
Textile Product Mills	420	400	438	398
Leather and Allied Product Manufacturing	228	185	173	192
Textile Mills	164	186	193	122
Grand Total	119,843	103,162	97,719	96,916

East Bay Number of Manufacturing Businesses by Industry (2001-2004)



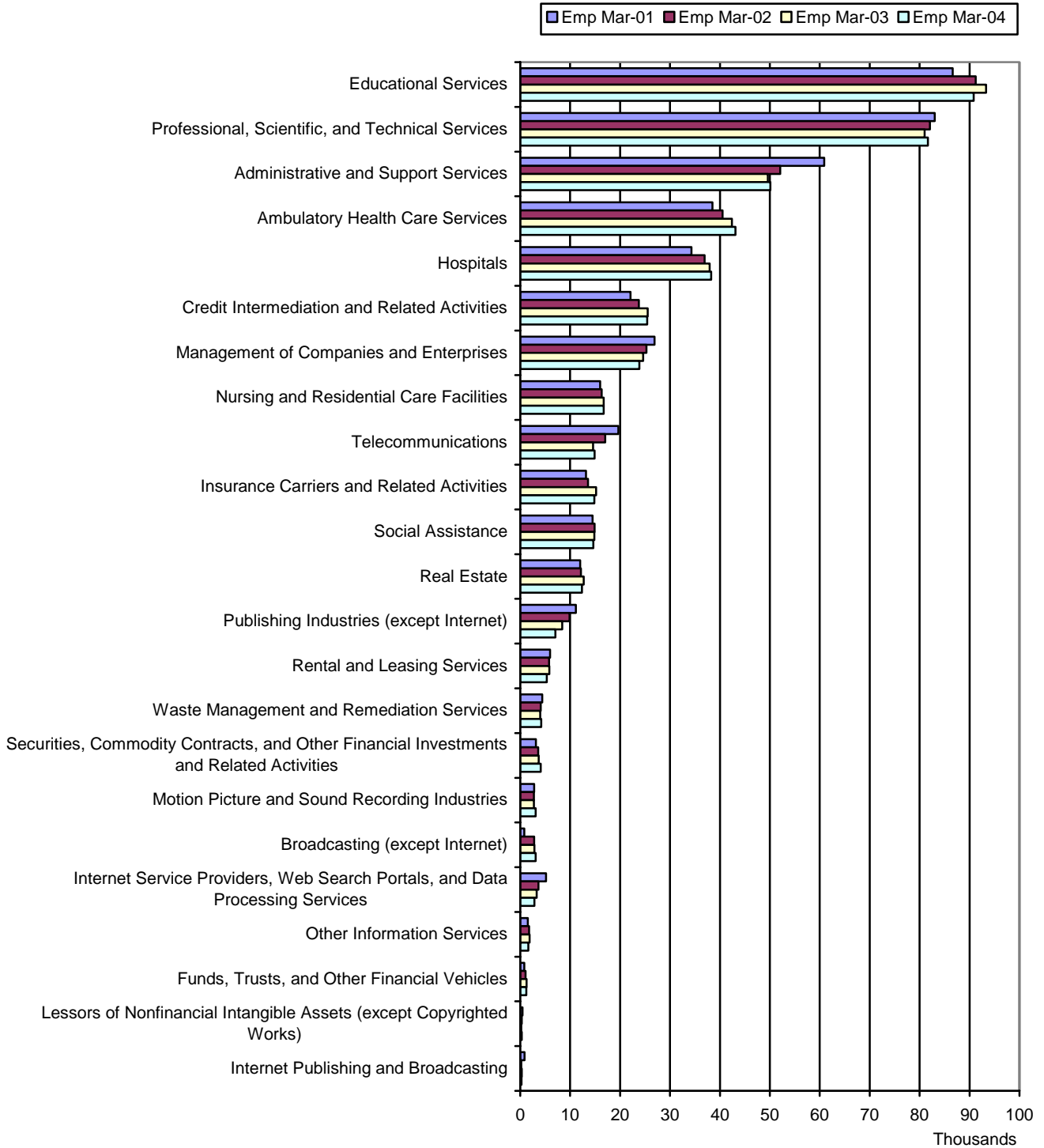
East Bay Number of Manufacturing Businesses by Industry				
Description	Bus Mar-01	Bus Mar-02	Bus Mar-03	Bus Mar-04
Computer and Electronic Product Manufacturing	486	485	474	531
Transportation Equipment Manufacturing	77	72	71	80
Chemical Manufacturing	150	153	151	172
Food Manufacturing	257	249	257	285
Fabricated Metal Product Manufacturing	530	515	493	535
Miscellaneous Manufacturing	311	311	311	331
Petroleum and Coal Products Manufacturing	43	47	52	62
Machinery Manufacturing	231	234	224	249
Nonmetallic Mineral Product Manufacturing	130	128	128	139
Printing and Related Support Activities	369	366	350	375
Plastics and Rubber Products Manufacturing	105	109	101	113
Primary Metal Manufacturing	56	56	56	62
Furniture and Related Product Manufacturing	173	177	173	194
Paper Manufacturing	46	49	51	55
Beverage and Tobacco Product Manufacturing	33	40	42	44
Apparel Manufacturing	117	111	101	111
Electrical Equipment, Appliance, and Component Manufacturing	66	69	67	80
Wood Product Manufacturing	69	69	70	76
Textile Product Mills	49	50	46	45
Leather and Allied Product Manufacturing	8	9	10	12
Textile Mills	19	21	25	24
Grand Total	3,325	3,320	3,253	3,575

East Bay Number of Manufacturing Businesses and Employment by Industry (2001-2004)



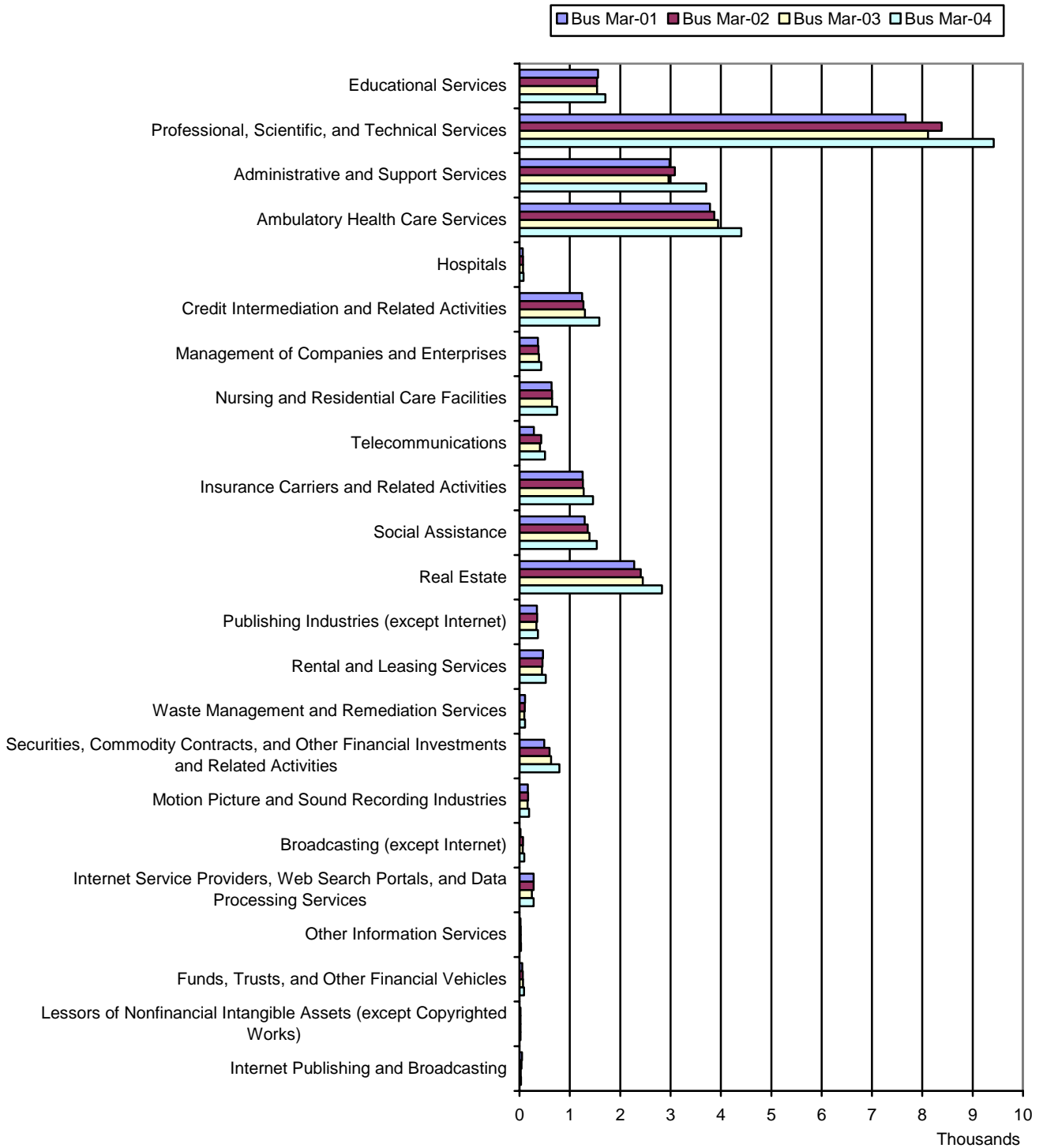
East Bay Manufacturing Employment by Industry		
Description	Emp Mar-04	Bus Mar-04
Computer and Electronic Product Manufacturing	21,780	531
Transportation Equipment Manufacturing	7,963	80
Chemical Manufacturing	7,931	172
Food Manufacturing	7,830	285
Fabricated Metal Product Manufacturing	7,090	535
Miscellaneous Manufacturing	7,064	331
Petroleum and Coal Products Manufacturing	6,782	62
Machinery Manufacturing	6,015	249
Nonmetallic Mineral Product Manufacturing	3,850	139
Printing and Related Support Activities	3,336	375
Plastics and Rubber Products Manufacturing	3,259	113
Primary Metal Manufacturing	3,051	62
Furniture and Related Product Manufacturing	2,761	194
Paper Manufacturing	2,350	55
Beverage and Tobacco Product Manufacturing	1,721	44
Apparel Manufacturing	1,354	111
Electrical Equipment, Appliance, and Component Manufacturing	1,165	80
Wood Product Manufacturing	902	76
Textile Product Mills	398	45
Leather and Allied Product Manufacturing	192	12
Textile Mills	122	24
Grand Total	96,916	3,575

East Bay Service Employment by Industry (2001-2004)



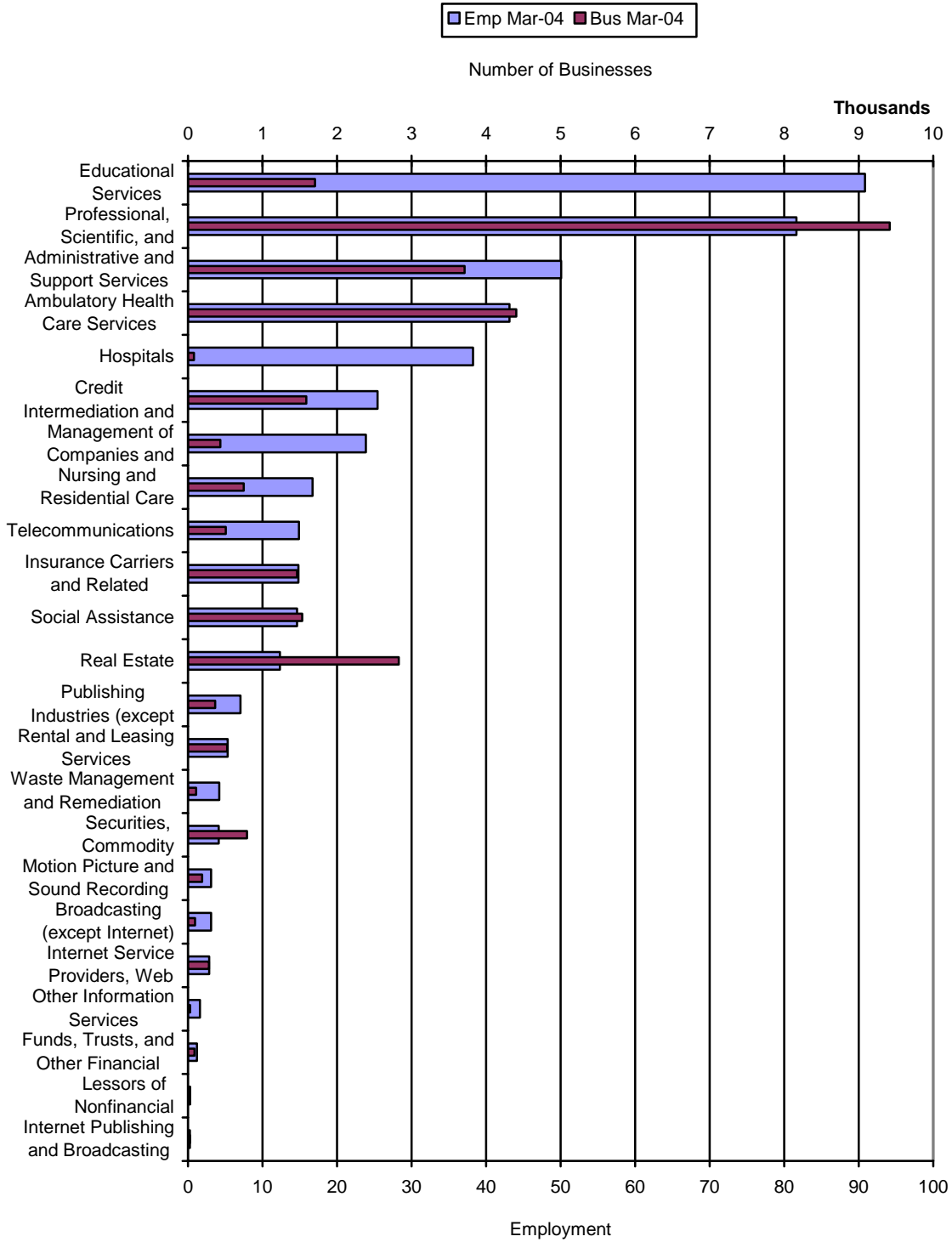
East Bay Service Employment by Industry				
Description	Emp Mar-01	Emp Mar-02	Emp Mar-03	Emp Mar-04
Educational Services	86,623	91,222	93,290	90,822
Professional, Scientific, and Technical Services	83,017	82,046	80,995	81,644
Administrative and Support Services	60,875	52,102	49,618	50,087
Ambulatory Health Care Services	38,490	40,545	42,392	43,132
Hospitals	34,314	36,947	37,931	38,262
Credit Intermediation and Related Activities	22,063	23,780	25,518	25,450
Management of Companies and Enterprises	26,913	25,278	24,620	23,859
Nursing and Residential Care Facilities	15,994	16,291	16,733	16,704
Telecommunications	19,669	17,007	14,609	14,906
Insurance Carriers and Related Activities	13,191	13,584	15,186	14,828
Social Assistance	14,481	14,901	14,868	14,641
Real Estate	12,022	12,166	12,730	12,341
Publishing Industries (except Internet)	11,144	9,902	8,409	7,026
Rental and Leasing Services	5,959	5,781	5,836	5,330
Waste Management and Remediation Services	4,407	4,114	4,011	4,187
Securities, Commodity Contracts, and Other Financial Investments and Related Activities	3,158	3,572	3,705	4,119
Motion Picture and Sound Recording Industries	2,799	2,730	2,719	3,103
Broadcasting (except Internet)	807	2,803	2,853	3,085
Internet Service Providers, Web Search Portals, and Data Processing Services	5,190	3,665	3,269	2,834
Other Information Services	1,525	1,772	1,876	1,612
Funds, Trusts, and Other Financial Vehicles	827	1,065	1,286	1,205
Lessors of Nonfinancial Intangible Assets (except Copyrighted Works)	443	318	223	301
Internet Publishing and Broadcasting	862	212	283	254
Grand Total	464,773	461,811	462,968	459,749

East Bay Number of Service Businesses by Industry (2001-2004)



East Bay Number of Service Businesses by Industry				
Description	Bus Mar-01	Bus Mar-02	Bus Mar-03	Bus Mar-04
Educational Services	1,558	1,538	1,540	1,705
Professional, Scientific, and Technical Services	7,669	8,386	8,113	9,417
Administrative and Support Services	2,978	3,086	2,962	3,710
Ambulatory Health Care Services	3,783	3,871	3,944	4,404
Hospitals	67	68	71	82
Credit Intermediation and Related Activities	1,242	1,269	1,298	1,586
Management of Companies and Enterprises	368	375	386	434
Nursing and Residential Care Facilities	636	647	649	749
Telecommunications	287	431	406	508
Insurance Carriers and Related Activities	1,252	1,257	1,273	1,462
Social Assistance	1,293	1,354	1,388	1,534
Real Estate	2,279	2,410	2,447	2,830
Publishing Industries (except Internet)	344	349	334	366
Rental and Leasing Services	469	459	448	524
Waste Management and Remediation Services	108	103	96	109
Securities, Commodity Contracts, and Other Financial Investments and Related Activities	492	597	625	792
Motion Picture and Sound Recording Industries	164	171	162	189
Broadcasting (except Internet)	18	71	63	94
Internet Service Providers, Web Search Portals, and Data Processing Services	283	279	244	280
Other Information Services	22	26	25	29
Funds, Trusts, and Other Financial Vehicles	55	66	70	88
Lessors of Nonfinancial Intangible Assets (except Copyrighted Works)	22	20	18	20
Internet Publishing and Broadcasting	52	40	23	28
Grand Total	25,441	26,874	26,586	30,942

East Bay Number of Service Businesses and Employment by Industry (2001-2004)



East Bay Number of Service Businesses and Employment by Industry		
Description	Emp Mar-04	Bus Mar-04
Educational Services	90,822	1,705
Professional, Scientific, and Technical Services	81,644	9,417
Administrative and Support Services	50,087	3,710
Ambulatory Health Care Services	43,132	4,404
Hospitals	38,262	82
Credit Intermediation and Related Activities	25,450	1,586
Management of Companies and Enterprises	23,859	434
Nursing and Residential Care Facilities	16,704	749
Telecommunications	14,906	508
Insurance Carriers and Related Activities	14,828	1,462
Social Assistance	14,641	1,534
Real Estate	12,341	2,830
Publishing Industries (except Internet)	7,026	366
Rental and Leasing Services	5,330	524
Waste Management and Remediation Services	4,187	109
Securities, Commodity Contracts, and Other Financial Investments and Related Activities	4,119	792
Motion Picture and Sound Recording Industries	3,103	189
Broadcasting (except Internet)	3,085	94
Internet Service Providers, Web Search Portals, and Data Processing Services	2,834	280
Other Information Services	1,612	29
Funds, Trusts, and Other Financial Vehicles	1,205	88
Lessors of Nonfinancial Intangible Assets (except Copyrighted Works)	301	20
Internet Publishing and Broadcasting	254	28
Grand Total	459,749	30,942

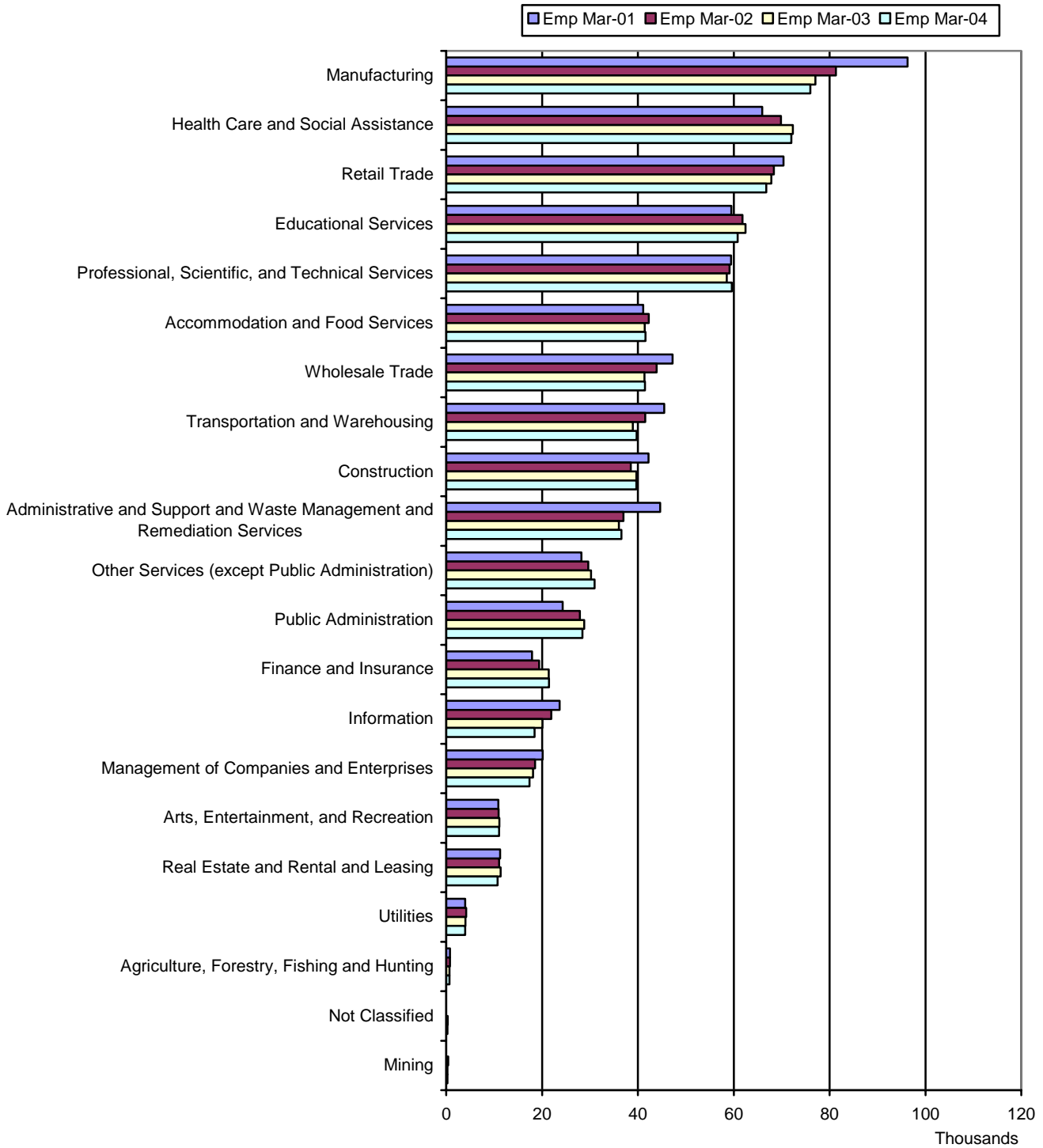


**Economic Development
Alliance For Business**

*Building Resources,
Businesses & Quality Jobs*

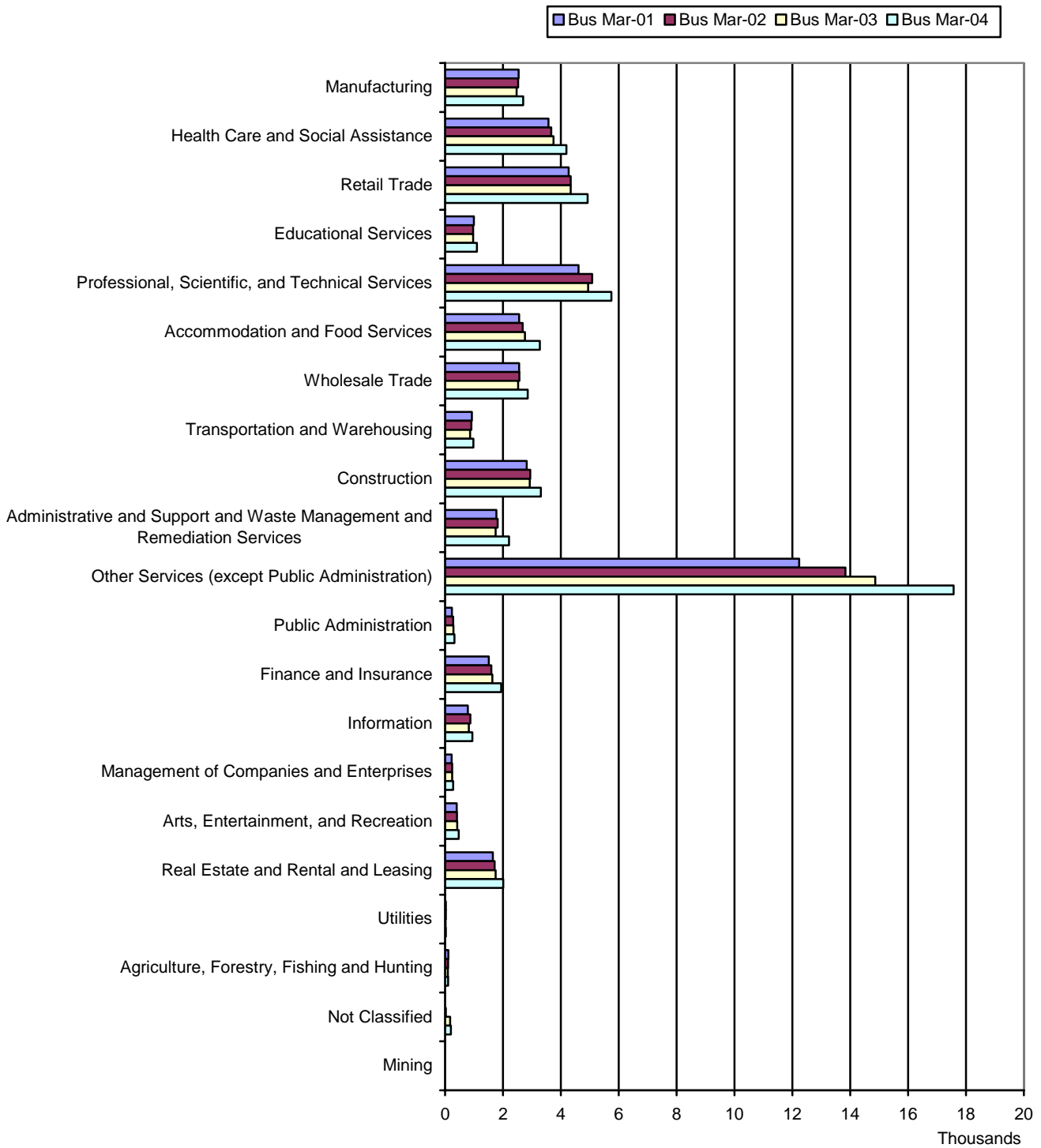
JAN 2001- MAR 2004
Industry Analysis
Alameda County

Alameda County Employment by Industry (2001-2004)



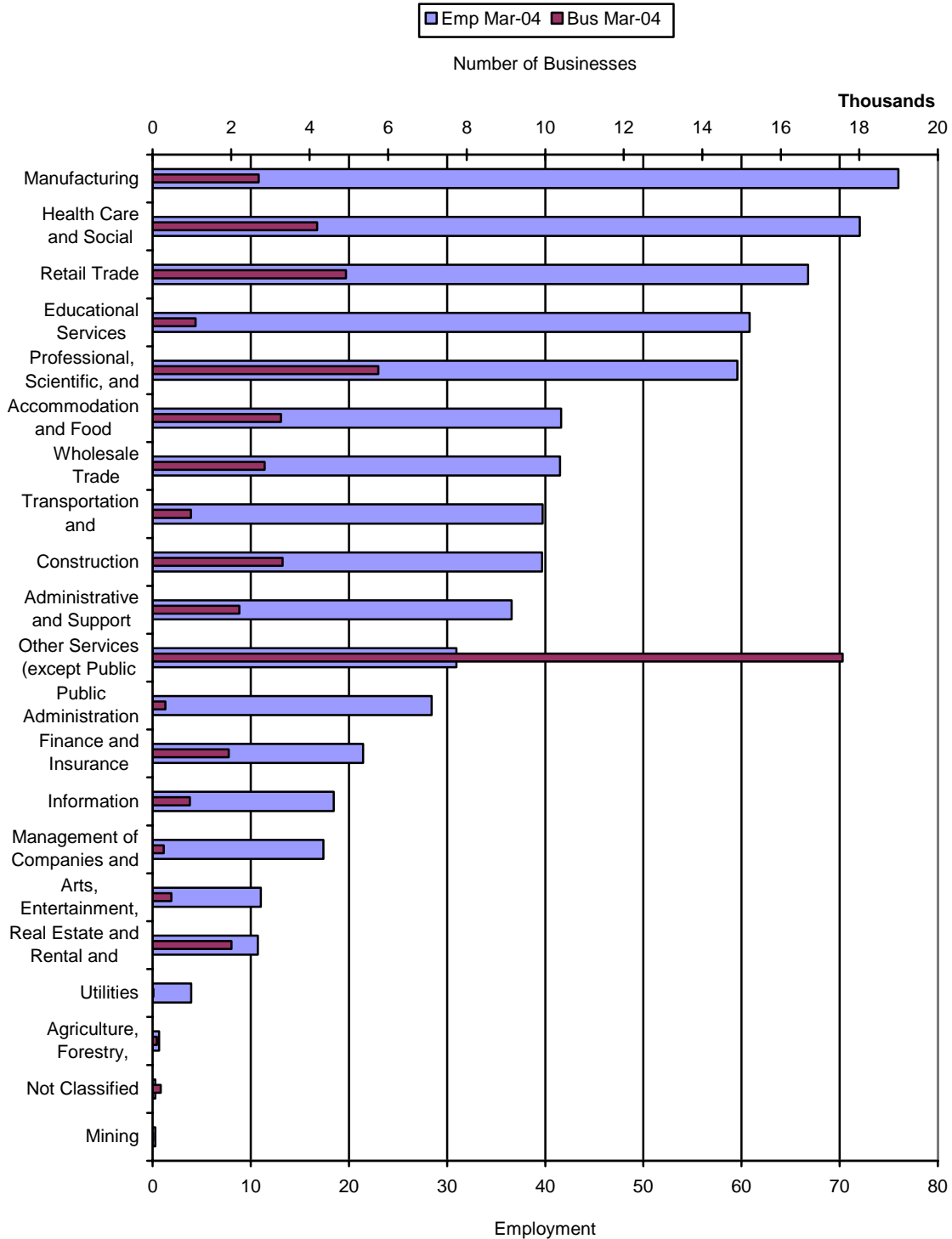
Alameda County Employment by Industry				
Description	Emp Mar-01	Emp Mar-02	Emp Mar-03	Emp Mar-04
Manufacturing	96,275	81,298	77,045	75,980
Health Care and Social Assistance	65,939	69,878	72,358	72,039
Retail Trade	70,389	68,383	67,851	66,782
Educational Services	59,500	61,813	62,465	60,829
Professional, Scientific, and Technical Services	59,449	59,105	58,569	59,579
Accommodation and Food Services	41,089	42,289	41,438	41,610
Wholesale Trade	47,257	43,888	41,384	41,497
Transportation and Warehousing	45,493	41,535	38,957	39,729
Construction	42,196	38,525	39,681	39,674
Administrative and Support and Waste Management and Remediation Services	44,650	36,995	36,047	36,565
Other Services (except Public Administration)	28,193	29,625	30,240	30,950
Public Administration	24,312	27,886	28,785	28,421
Finance and Insurance	17,918	19,400	21,414	21,453
Information	23,697	21,906	20,060	18,453
Management of Companies and Enterprises	20,117	18,558	18,114	17,392
Arts, Entertainment, and Recreation	10,895	10,928	11,091	11,040
Real Estate and Rental and Leasing	11,258	11,045	11,365	10,716
Utilities	3,938	4,160	4,026	3,942
Agriculture, Forestry, Fishing and Hunting	807	816	668	668
Not Classified	N/A	35	304	281
Mining	N/A	400	281	264
Grand Total	713,735	688,468	682,143	677,864

Alameda County Number of Businesses by Industry (2001-2004)



Alameda County Number of Businesses by Industry				
Description	Bus Mar-01	Bus Mar-02	Bus Mar-03	Bus Mar-04
Manufacturing	2,540	2,528	2,471	2,699
Health Care and Social Assistance	3,575	3,669	3,751	4,188
Retail Trade	4,269	4,338	4,341	4,923
Educational Services	996	971	971	1,098
Professional, Scientific, and Technical Services	4,613	5,085	4,940	5,751
Accommodation and Food Services	2,559	2,685	2,763	3,272
Wholesale Trade	2,555	2,568	2,526	2,857
Transportation and Warehousing	923	907	867	976
Construction	2,819	2,941	2,930	3,311
Administrative and Support and Waste Management and Remediation Services	1,775	1,818	1,748	2,213
Other Services (except Public Administration)	12,240	13,833	14,861	17,572
Public Administration	237	282	292	324
Finance and Insurance	1,508	1,597	1,629	1,940
Information	786	875	819	947
Management of Companies and Enterprises	230	245	247	281
Arts, Entertainment, and Recreation	398	414	416	475
Real Estate and Rental and Leasing	1,652	1,715	1,745	2,007
Utilities	25	22	21	23
Agriculture, Forestry, Fishing and Hunting	111	108	95	108
Not Classified	1	23	173	205
Mining	10	12	12	13
Grand Total	43,822	46,636	47,618	55,183

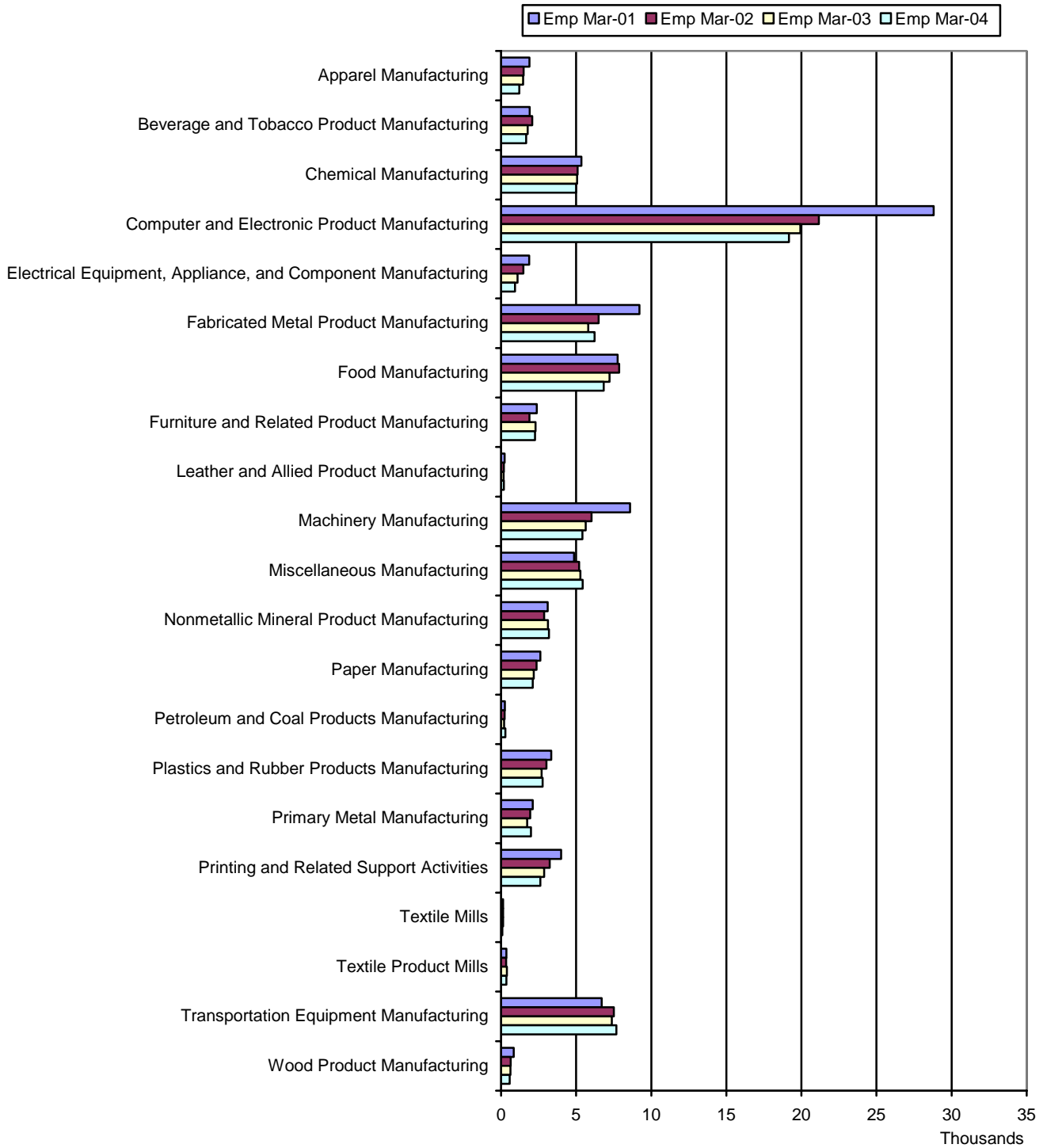
Alameda County Number of Businesses and Employment by Industry (2001-2004)



Alameda County Number of Businesses and Employment by Industry

Description	Emp Mar-04	Bus Mar-04
Manufacturing	75,980	2,699
Health Care and Social Assistance	72,039	4,188
Retail Trade	66,782	4,923
Educational Services	60,829	1,098
Professional, Scientific, and Technical Services	59,579	5,751
Accommodation and Food Services	41,610	3,272
Wholesale Trade	41,497	2,857
Transportation and Warehousing	39,729	976
Construction	39,674	3,311
Administrative and Support and Waste Management and Remediation Services	36,565	2,213
Other Services (except Public Administration)	30,950	17,572
Public Administration	28,421	324
Finance and Insurance	21,453	1,940
Information	18,453	947
Management of Companies and Enterprises	17,392	281
Arts, Entertainment, and Recreation	11,040	475
Real Estate and Rental and Leasing	10,716	2,007
Utilities	3,942	23
Agriculture, Forestry, Fishing and Hunting	668	108
Not Classified	281	205
Mining	264	13
Grand Total	677,864	55,183

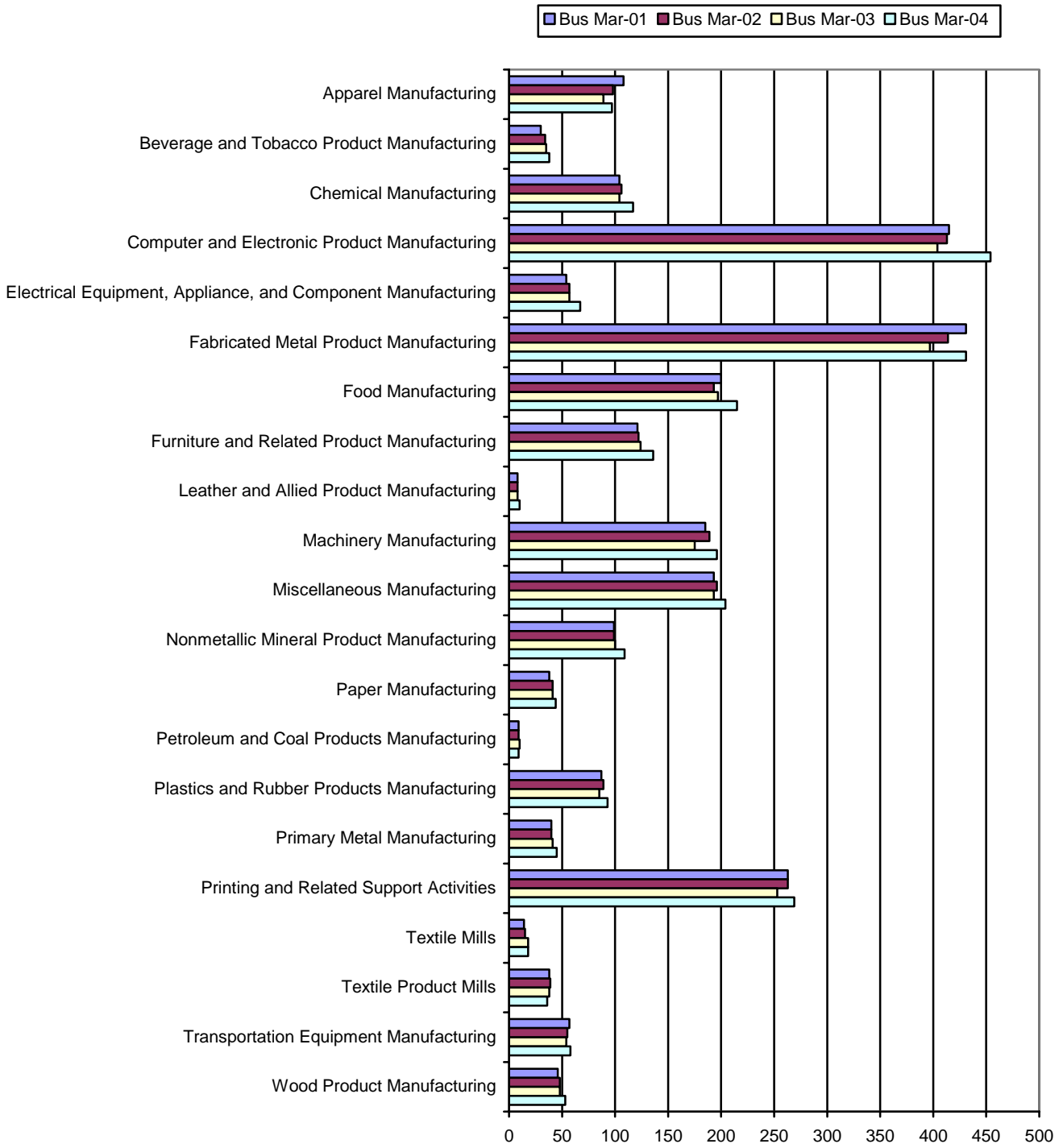
Alameda County Manufacturing Employment by Industry (2001-2004)



Alameda County Manufacturing Employment by Industry

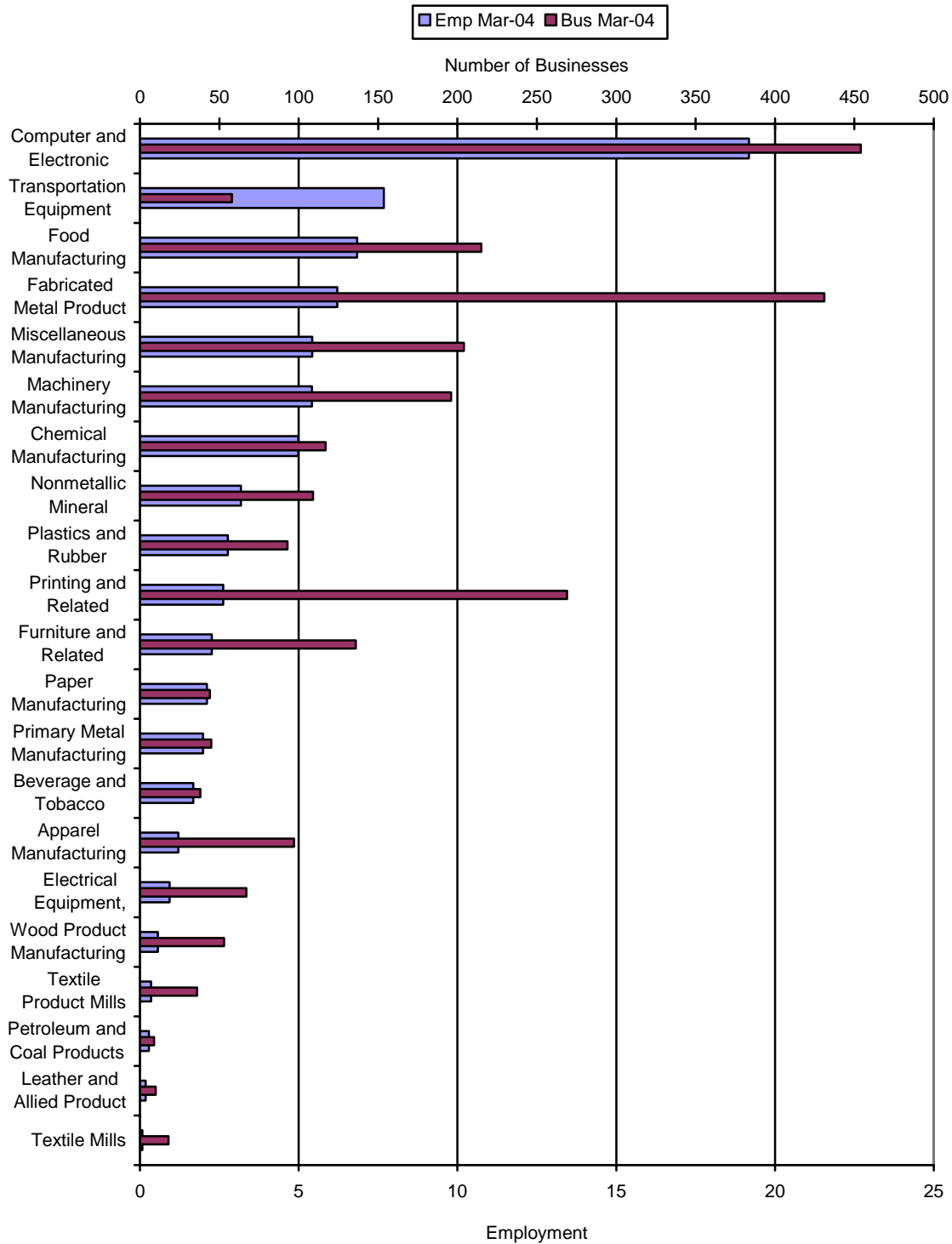
Description	Emp Mar-01	Emp Mar-02	Emp Mar-03	Emp Mar-04
Apparel Manufacturing	1,888	1,497	1,460	1,211
Beverage and Tobacco Product Manufacturing	1,904	2,074	1,767	1,677
Chemical Manufacturing	5,346	5,094	5,069	4,993
Computer and Electronic Product Manufacturing	28,812	21,167	19,923	19,175
Electrical Equipment, Appliance, and Component Manufacturing	1,866	1,477	1,091	931
Fabricated Metal Product Manufacturing	9,221	6,505	5,813	6,219
Food Manufacturing	7,763	7,865	7,216	6,840
Furniture and Related Product Manufacturing	2,372	1,884	2,288	2,265
Leather and Allied Product Manufacturing	228	182	169	178
Machinery Manufacturing	8,587	6,021	5,636	5,416
Miscellaneous Manufacturing	4,854	5,196	5,288	5,426
Nonmetallic Mineral Product Manufacturing	3,099	2,871	3,123	3,185
Paper Manufacturing	2,618	2,370	2,178	2,113
Petroleum and Coal Products Manufacturing	247	231	203	286
Plastics and Rubber Products Manufacturing	3,341	3,029	2,697	2,767
Primary Metal Manufacturing	2,108	1,945	1,739	1,993
Printing and Related Support Activities	4,006	3,245	2,861	2,622
Textile Mills	128	140	141	80
Textile Product Mills	354	345	389	355
Transportation Equipment Manufacturing	6,692	7,511	7,370	7,681
Wood Product Manufacturing	841	649	624	567
Grand Total	96,275	81,298	77,045	75,980

Alameda County Number of Manufacturing Businesses by Industry (2001-2004)



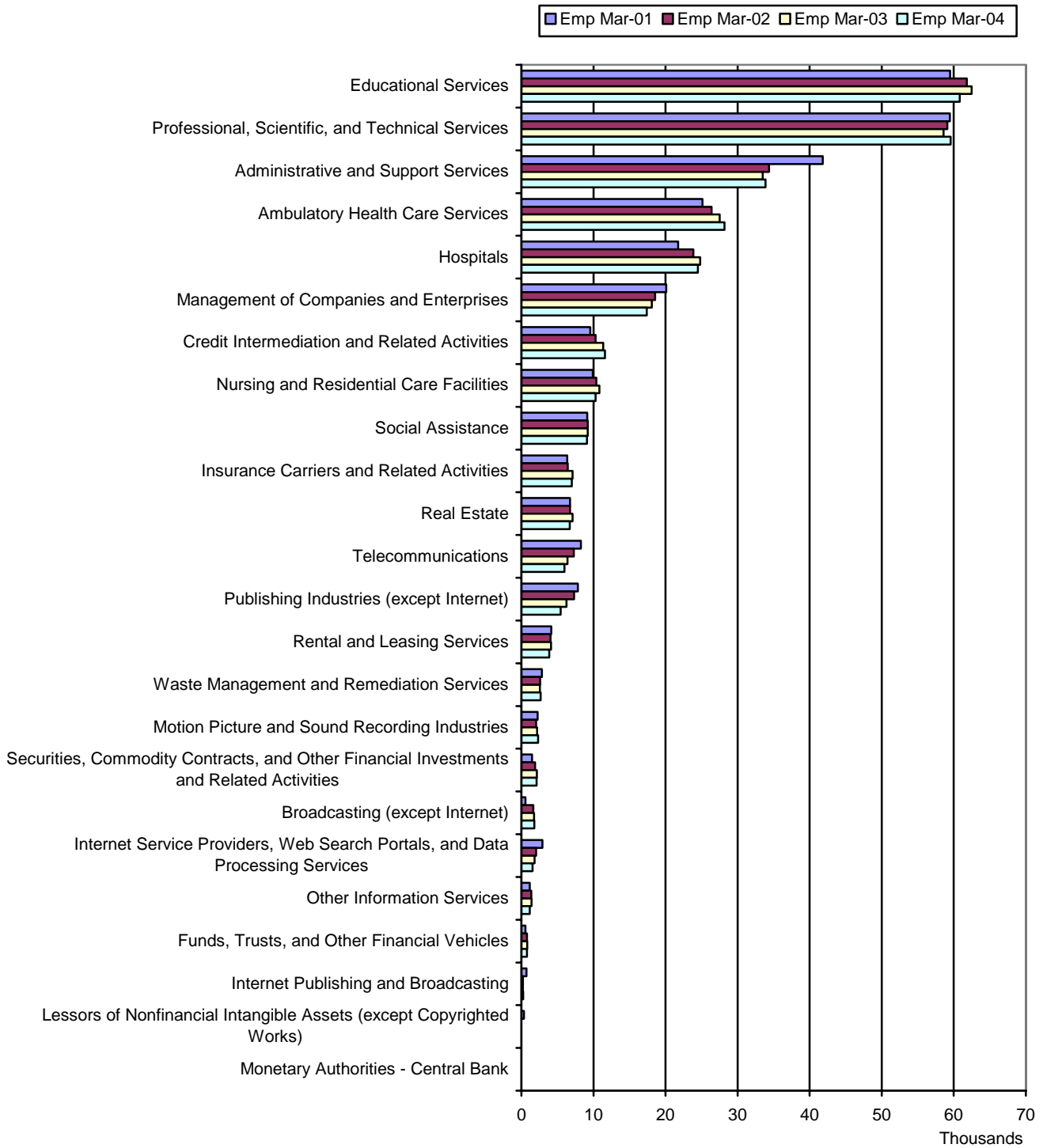
Alameda County Manufacturing Employment by Industry				
Description	Bus Mar-01	Bus Mar-02	Bus Mar-03	Bus Mar-04
Apparel Manufacturing	108	98	89	97
Beverage and Tobacco Product Manufacturing	30	34	35	38
Chemical Manufacturing	104	106	104	117
Computer and Electronic Product Manufacturing	415	413	404	454
Electrical Equipment, Appliance, and Component Manufacturing	54	57	57	67
Fabricated Metal Product Manufacturing	431	414	397	431
Food Manufacturing	200	193	197	215
Furniture and Related Product Manufacturing	121	122	124	136
Leather and Allied Product Manufacturing	8	8	8	10
Machinery Manufacturing	185	189	175	196
Miscellaneous Manufacturing	193	196	193	204
Nonmetallic Mineral Product Manufacturing	99	99	100	109
Paper Manufacturing	38	41	41	44
Petroleum and Coal Products Manufacturing	9	9	10	9
Plastics and Rubber Products Manufacturing	87	89	85	93
Primary Metal Manufacturing	40	40	41	45
Printing and Related Support Activities	263	263	253	269
Textile Mills	14	15	18	18
Textile Product Mills	38	39	38	36
Transportation Equipment Manufacturing	57	55	54	58
Wood Product Manufacturing	46	48	48	53
Grand Total	2,540	2,528	2,471	2,699

Alameda County Number of Manufacturing Businesses and Employment by Industry (2001-2004)



Alameda County Number of Manufacturing Businesses and Employment by Industry		
Description	Emp Mar-04	Bus Mar-04
Computer and Electronic Product Manufacturing	19,175	454
Transportation Equipment Manufacturing	7,681	58
Food Manufacturing	6,840	215
Fabricated Metal Product Manufacturing	6,219	431
Miscellaneous Manufacturing	5,426	204
Machinery Manufacturing	5,416	196
Chemical Manufacturing	4,993	117
Nonmetallic Mineral Product Manufacturing	3,185	109
Plastics and Rubber Products Manufacturing	2,767	93
Printing and Related Support Activities	2,622	269
Furniture and Related Product Manufacturing	2,265	136
Paper Manufacturing	2,113	44
Primary Metal Manufacturing	1,993	45
Beverage and Tobacco Product Manufacturing	1,677	38
Apparel Manufacturing	1,211	97
Electrical Equipment, Appliance, and Component Manufacturing	931	67
Wood Product Manufacturing	567	53
Textile Product Mills	355	36
Petroleum and Coal Products Manufacturing	286	9
Leather and Allied Product Manufacturing	178	10
Textile Mills	80	18
Grand Total	75,980	2,699

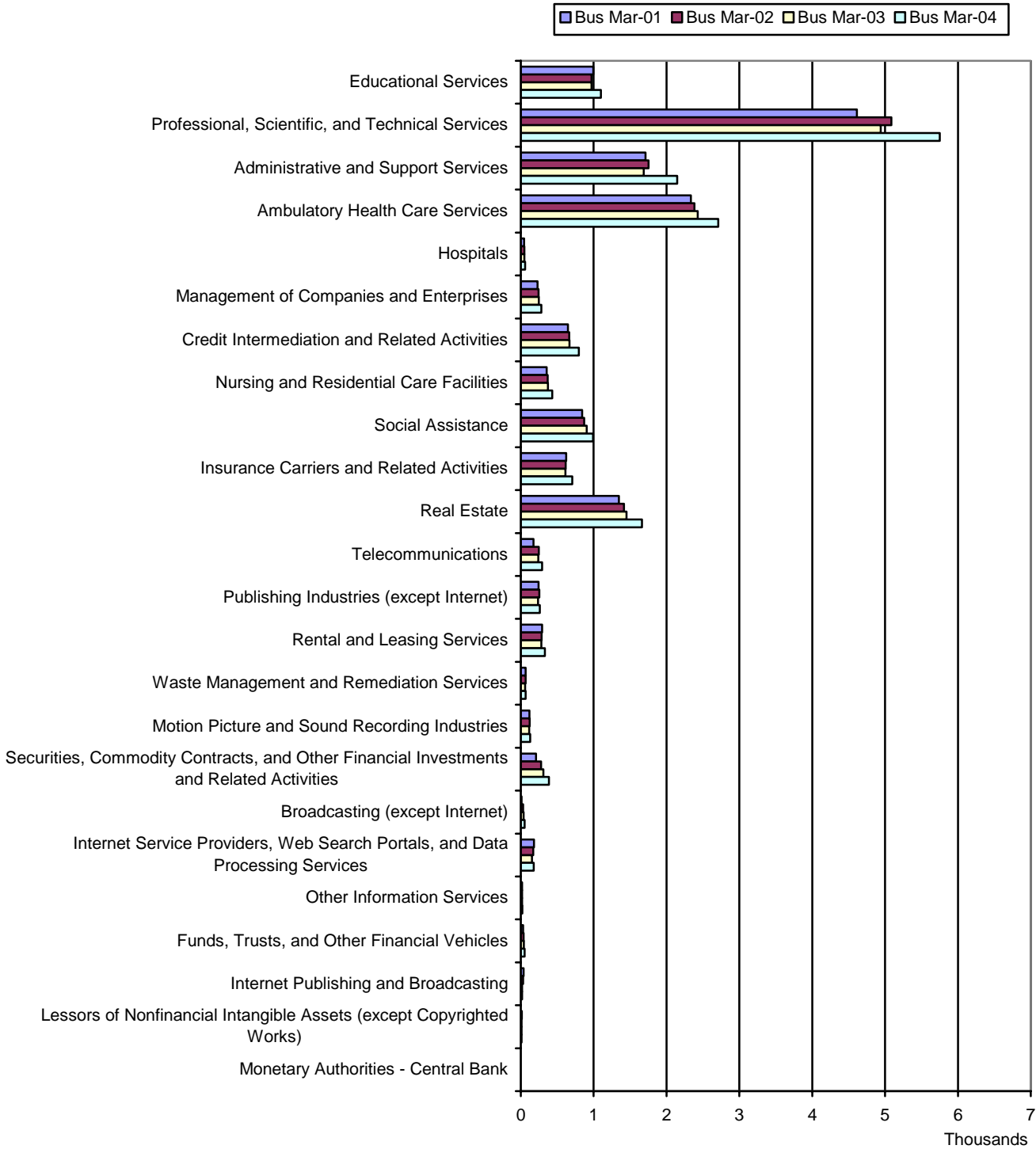
Alameda County Service Employment by Industry (2001-2004)



Alameda County Service Employment by Industry

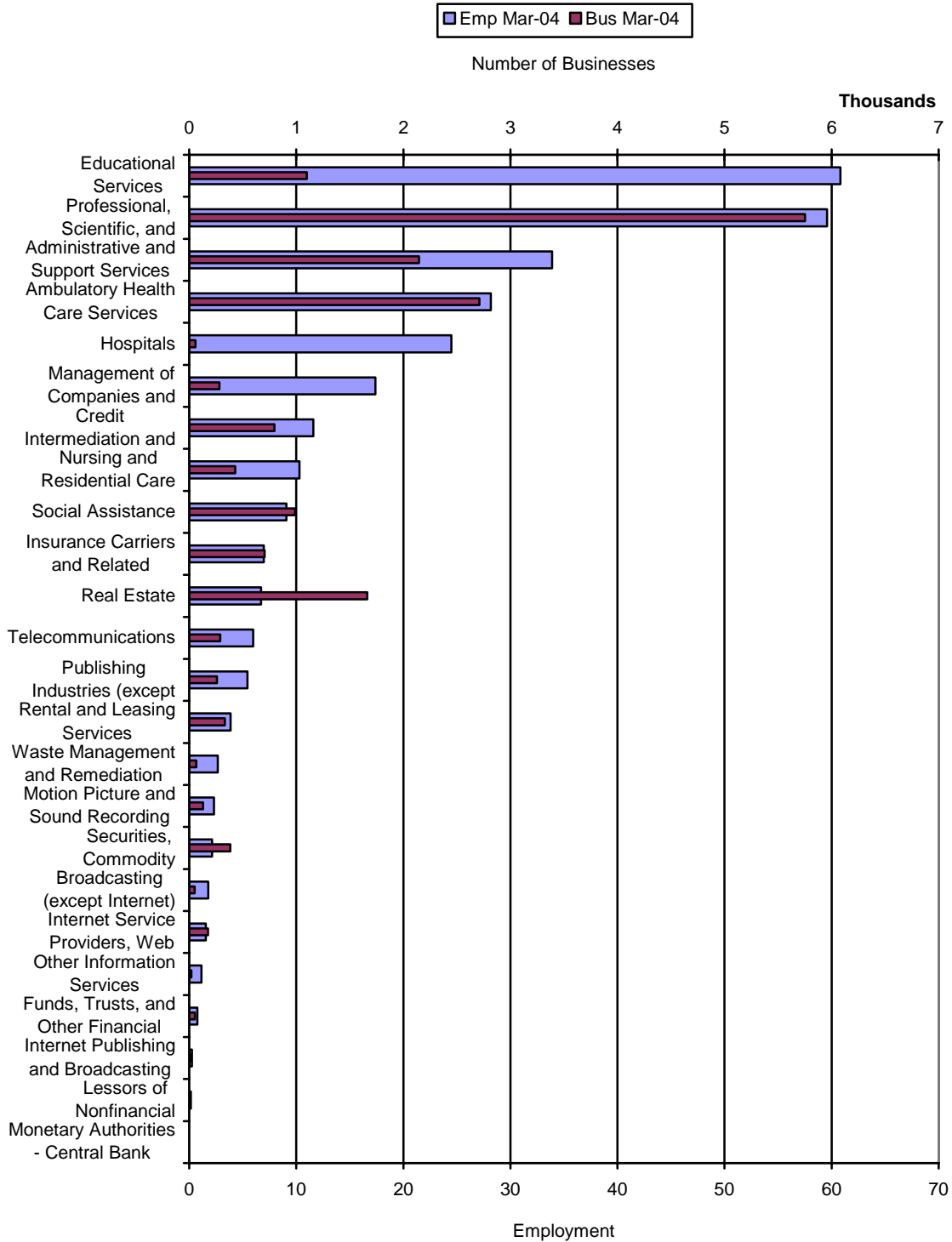
Description	Emp Mar-01	Emp Mar-02	Emp Mar-03	Emp Mar-04
Educational Services	59,500	61,813	62,465	60,829
Professional, Scientific, and Technical Services	59,449	59,105	58,569	59,579
Administrative and Support Services	41,814	34,380	33,482	33,891
Ambulatory Health Care Services	25,136	26,376	27,531	28,183
Hospitals	21,766	23,872	24,808	24,478
Management of Companies and Enterprises	20,117	18,558	18,114	17,392
Credit Intermediation and Related Activities	9,541	10,309	11,360	11,584
Nursing and Residential Care Facilities	9,915	10,414	10,814	10,292
Social Assistance	9,122	9,216	9,205	9,086
Insurance Carriers and Related Activities	6,358	6,437	7,115	6,976
Real Estate	6,745	6,753	7,084	6,713
Telecommunications	8,265	7,270	6,384	5,969
Publishing Industries (except Internet)	7,849	7,319	6,245	5,441
Rental and Leasing Services	4,152	4,056	4,126	3,854
Waste Management and Remediation Services	2,836	2,615	2,565	2,674
Motion Picture and Sound Recording Industries	2,244	2,038	2,195	2,320
Securities, Commodity Contracts, and Other Financial Investments and Related Activities	1,468	1,883	2,129	2,126
Broadcasting (except Internet)	561	1,665	1,762	1,779
Internet Service Providers, Web Search Portals, and Data Processing Services	2,911	2,042	1,839	1,541
Other Information Services	1,172	1,366	1,411	1,156
Funds, Trusts, and Other Financial Vehicles	551	763	802	757
Internet Publishing and Broadcasting	695	206	224	247
Lessors of Nonfinancial Intangible Assets (except Copyrighted Works)	361	N/A	N/A	N/A
Monetary Authorities - Central Bank	N/A	N/A	N/A	N/A
Grand Total	302,528	298,700	300,392	297,026

Alameda County Number of Service Businesses by Industry (2001-2004)



Alameda County Number of Service Businesses by Industry				
Description	Bus Mar-01	Bus Mar-02	Bus Mar-03	Bus Mar-04
Educational Services	996	971	971	1,098
Professional, Scientific, and Technical Services	4,613	5,085	4,940	5,751
Administrative and Support Services	1,710	1,753	1,689	2,146
Ambulatory Health Care Services	2,334	2,382	2,429	2,710
Hospitals	44	48	48	58
Management of Companies and Enterprises	230	245	247	281
Credit Intermediation and Related Activities	646	663	667	796
Nursing and Residential Care Facilities	356	368	371	430
Social Assistance	841	871	903	990
Insurance Carriers and Related Activities	623	616	611	705
Real Estate	1,346	1,417	1,451	1,664
Telecommunications	175	248	240	291
Publishing Industries (except Internet)	245	253	237	260
Rental and Leasing Services	292	286	283	332
Waste Management and Remediation Services	65	65	59	67
Motion Picture and Sound Recording Industries	117	121	114	130
Securities, Commodity Contracts, and Other Financial Investments and Related Activities	208	277	309	385
Broadcasting (except Internet)	11	32	37	51
Internet Service Providers, Web Search Portals, and Data Processing Services	181	172	154	176
Other Information Services	17	19	18	21
Funds, Trusts, and Other Financial Vehicles	31	40	41	53
Internet Publishing and Broadcasting	40	30	19	18
Lessors of Nonfinancial Intangible Assets (except Copyrighted Works)	14	12	11	11
Monetary Authorities - Central Bank	0	1	1	1
Grand Total	15,135	15,975	15,850	18,425

Alameda County Number of Service Businesses and Employment by Industry (2001-2004)



Alameda County Number of Service Businesses and Employment by Industry		
Description	Emp Mar-04	Bus Mar-04
Educational Services	60,829	1,098
Professional, Scientific, and Technical Services	59,579	5,751
Administrative and Support Services	33,891	2,146
Ambulatory Health Care Services	28,183	2,710
Hospitals	24,478	58
Management of Companies and Enterprises	17,392	281
Credit Intermediation and Related Activities	11,584	796
Nursing and Residential Care Facilities	10,292	430
Social Assistance	9,086	990
Insurance Carriers and Related Activities	6,976	705
Real Estate	6,713	1,664
Telecommunications	5,969	291
Publishing Industries (except Internet)	5,441	260
Rental and Leasing Services	3,854	332
Waste Management and Remediation Services	2,674	67
Motion Picture and Sound Recording Industries	2,320	130
Securities, Commodity Contracts, and Other Financial Investments and Related Activities	2,126	385
Broadcasting (except Internet)	1,779	51
Internet Service Providers, Web Search Portals, and Data Processing Services	1,541	176
Other Information Services	1,156	21
Funds, Trusts, and Other Financial Vehicles	757	53
Internet Publishing and Broadcasting	247	18
Lessors of Nonfinancial Intangible Assets (except Copyrighted Works)	N/A	11
Monetary Authorities - Central Bank	N/A	1
Grand Total	297,026	18,425

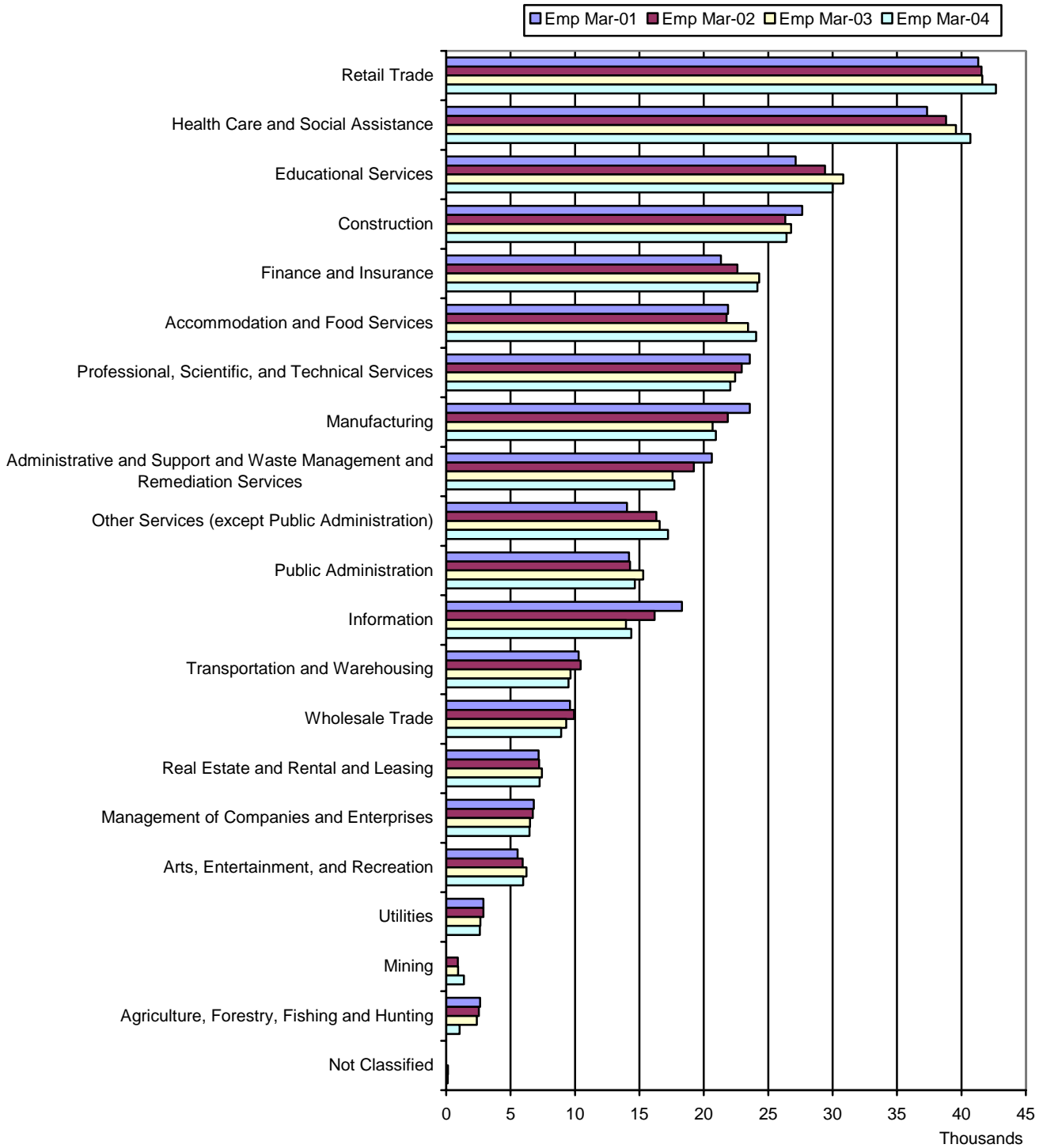


**Economic Development
Alliance For Business**

*Building Resources,
Businesses & Quality Jobs*

JAN 2001- MAR 2004
Industry Analysis
Contra Costa County

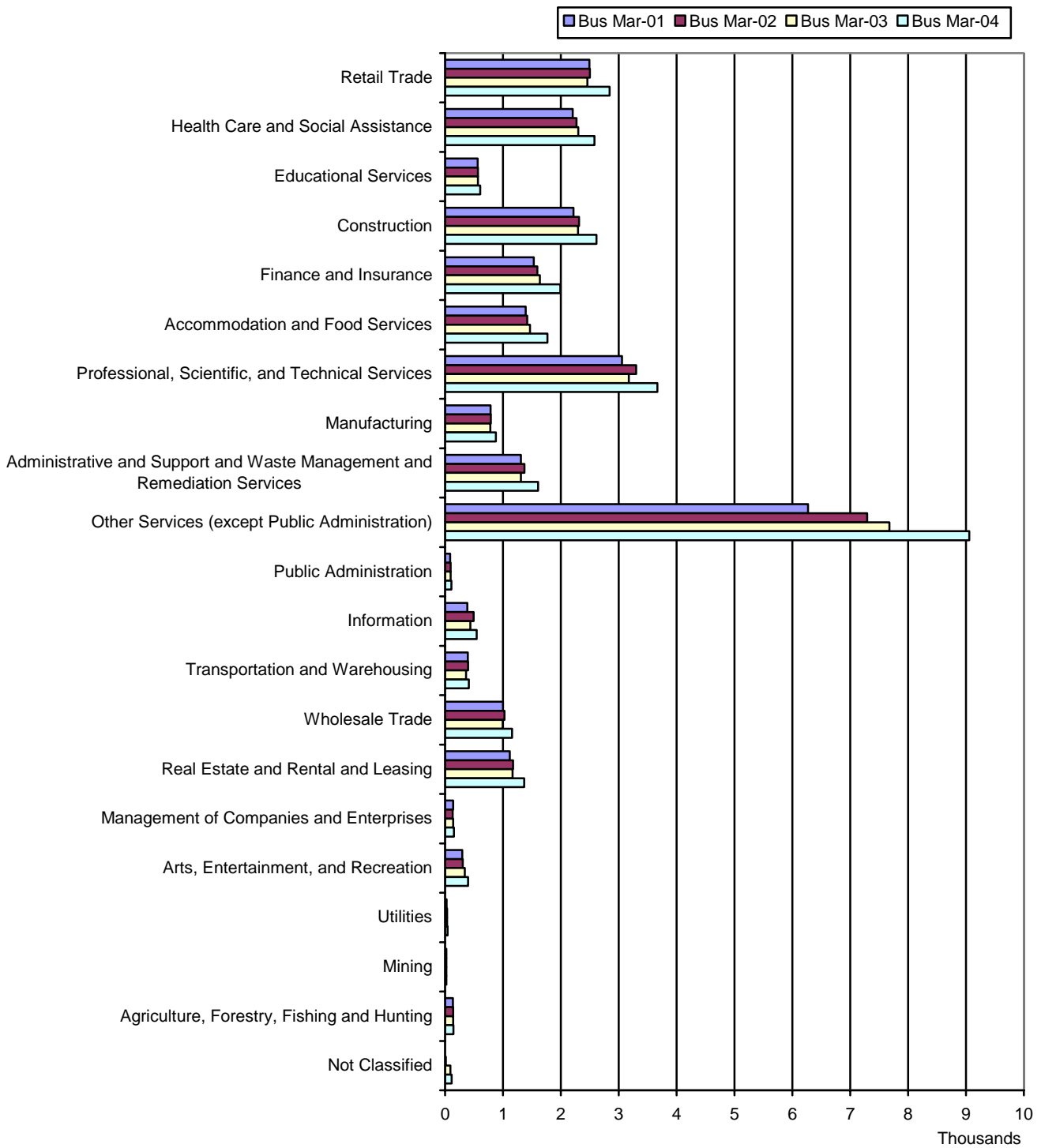
Contra Costa County Employment by Industry (2001-2004)



Contra Costa County Employment by Industry

Description	Emp Mar-01	Emp Mar-02	Emp Mar-03	Emp Mar-04
Retail Trade	41,310	41,560	41,621	42,690
Health Care and Social Assistance	37,340	38,806	39,566	40,700
Educational Services	27,123	29,409	30,825	29,993
Construction	27,638	26,317	26,770	26,419
Finance and Insurance	21,321	22,609	24,289	24,166
Accommodation and Food Services	21,874	21,761	23,428	24,061
Professional, Scientific, and Technical Services	23,568	22,941	22,426	22,065
Manufacturing	23,568	21,864	20,674	20,936
Administrative and Support and Waste Management and Remediation Services	20,632	19,221	17,582	17,709
Other Services (except Public Administration)	14,043	16,322	16,568	17,212
Public Administration	14,196	14,266	15,293	14,642
Information	18,299	16,185	13,958	14,367
Transportation and Warehousing	10,282	10,436	9,646	9,491
Wholesale Trade	9,604	9,927	9,322	8,922
Real Estate and Rental and Leasing	7,166	7,220	7,424	7,256
Management of Companies and Enterprises	6,796	6,720	6,506	6,467
Arts, Entertainment, and Recreation	5,542	5,933	6,234	5,969
Utilities	2,882	2,882	2,647	2,607
Mining	N/A	898	920	1,384
Agriculture, Forestry, Fishing and Hunting	2,631	2,541	2,378	1,042
Not Classified	N/A	20	135	126
Grand Total	337,296	337,838	338,212	338,224

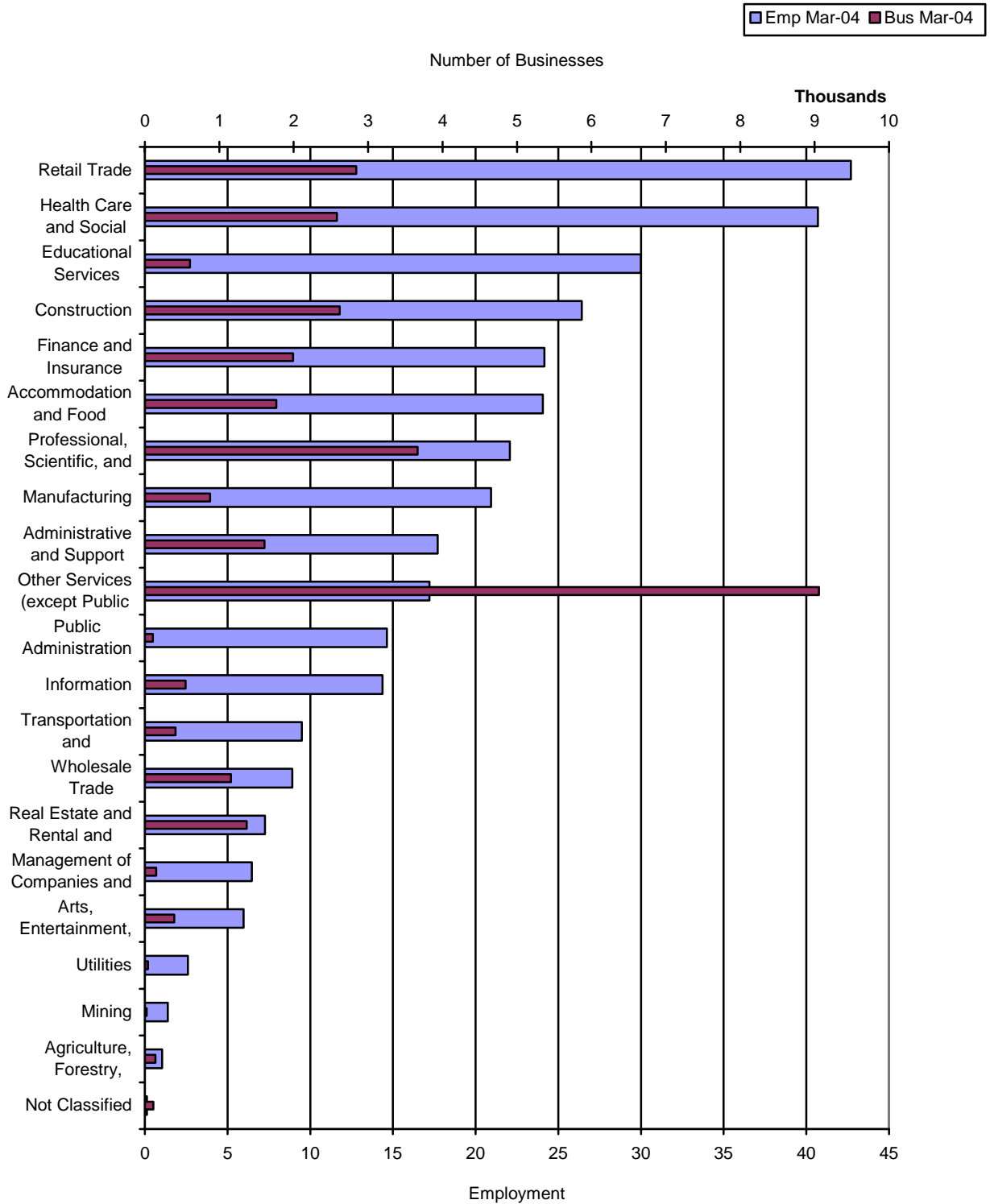
Contra Costa County Number of Businesses by Industry (2001-2004)



Contra Costa County Number of Businesses by Industry

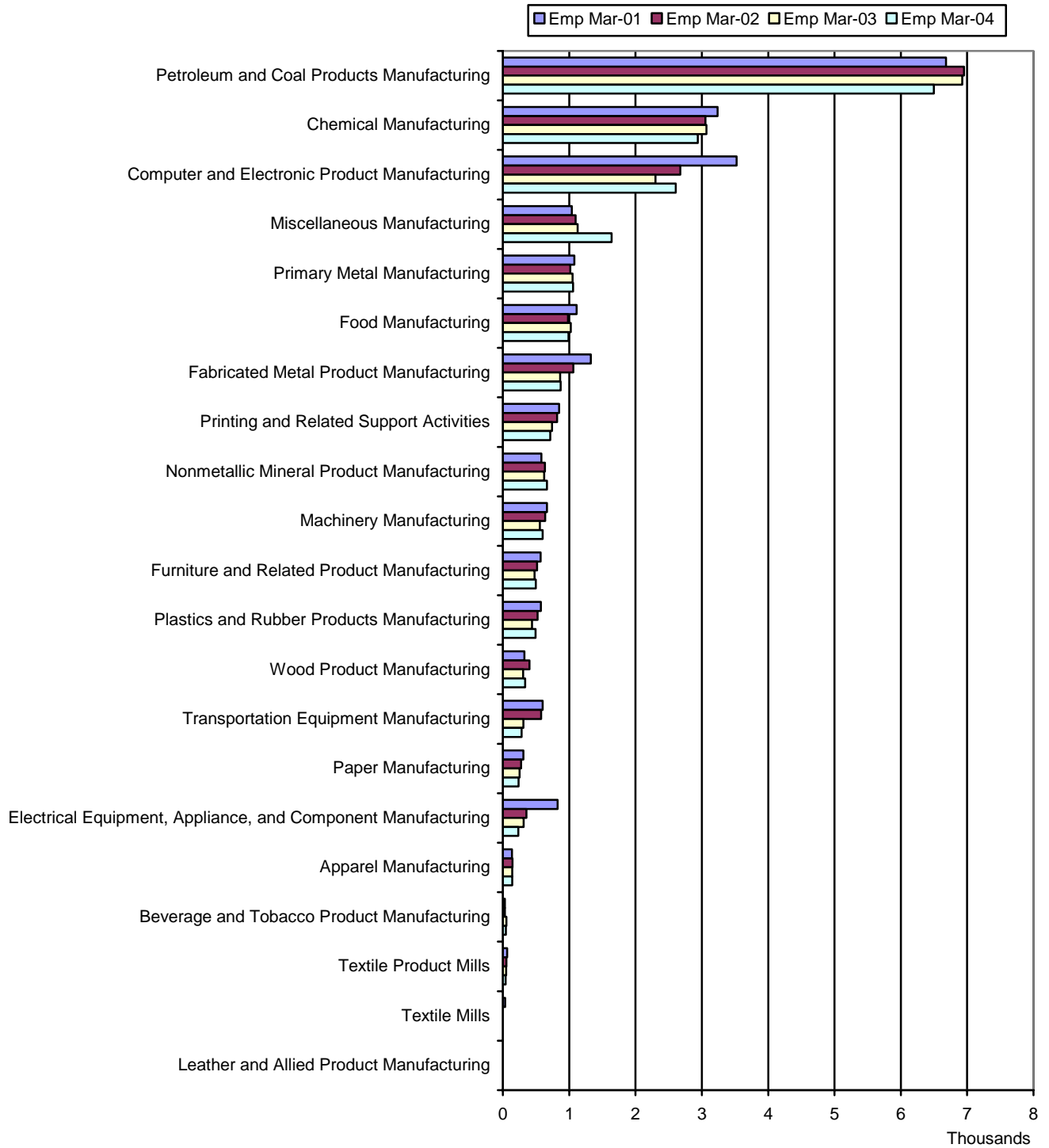
Description	Bus Mar-01	Bus Mar-02	Bus Mar-03	Bus Mar-04
Retail Trade	2,493	2,502	2,458	2,841
Health Care and Social Assistance	2,204	2,271	2,301	2,581
Educational Services	562	567	569	607
Construction	2,218	2,314	2,297	2,617
Finance and Insurance	1,533	1,593	1,638	1,990
Accommodation and Food Services	1,392	1,418	1,467	1,767
Professional, Scientific, and Technical Services	3,056	3,301	3,173	3,666
Manufacturing	785	792	782	876
Administrative and Support and Waste Management and Remediation Services	1,311	1,371	1,310	1,606
Other Services (except Public Administration)	6,271	7,292	7,675	9,058
Public Administration	86	94	97	108
Information	384	492	438	547
Transportation and Warehousing	392	397	362	411
Wholesale Trade	1,000	1,026	995	1,158
Real Estate and Rental and Leasing	1,118	1,174	1,168	1,367
Management of Companies and Enterprises	138	130	139	153
Arts, Entertainment, and Recreation	295	306	340	396
Utilities	26	33	36	43
Mining	23	21	20	24
Agriculture, Forestry, Fishing and Hunting	137	140	140	142
Not Classified	2	15	92	114
Grand Total	25,426	27,249	27,497	32,072

Contra Costa County Number of Businesses and Employment by Industry (2001-2004)



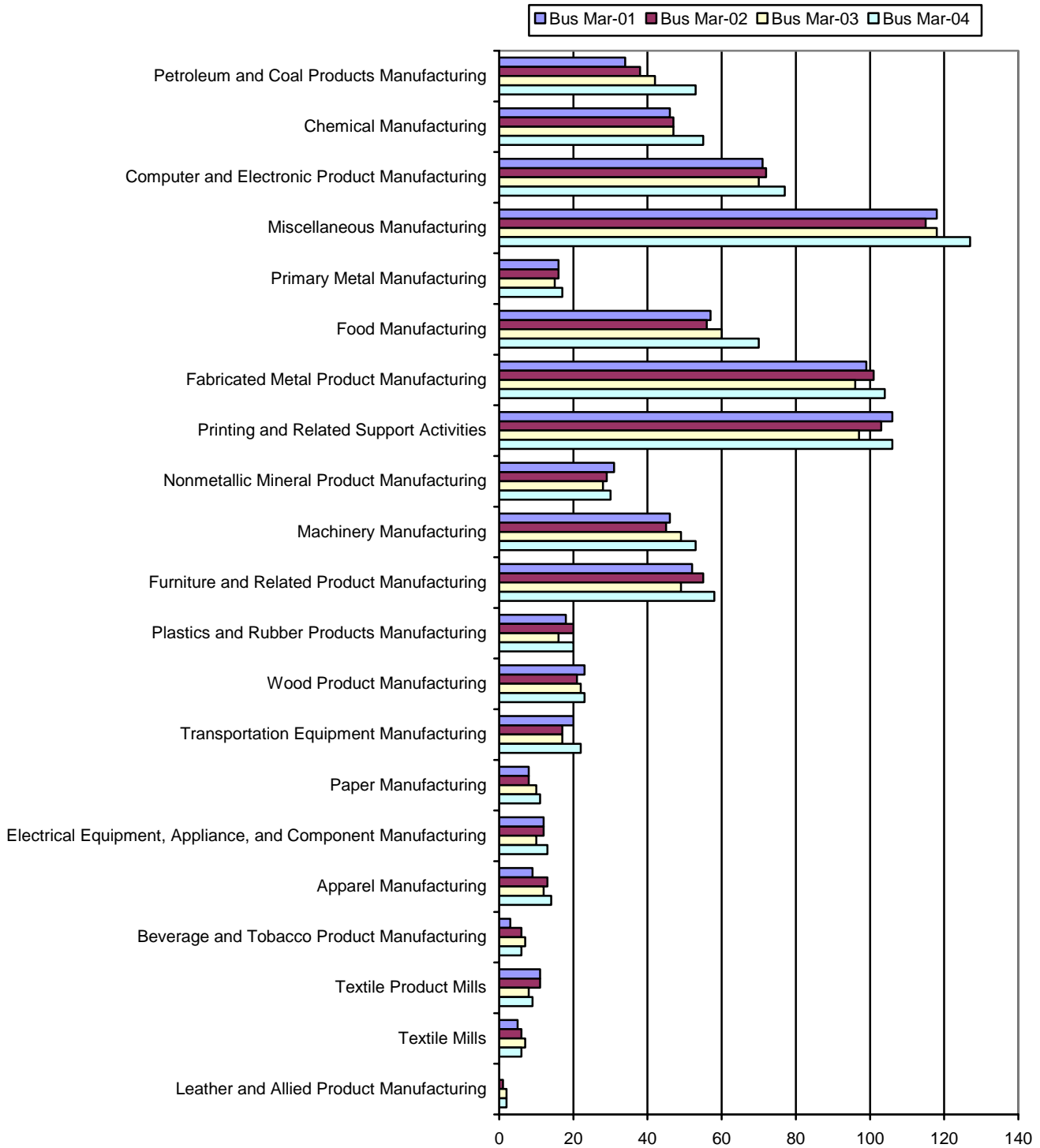
Contra Costa County Number of Businesses and Employment by Industry		
Description	Emp Mar-04	Bus Mar-04
Retail Trade	42,690	2,841
Health Care and Social Assistance	40,700	2,581
Educational Services	29,993	607
Construction	26,419	2,617
Finance and Insurance	24,166	1,990
Accommodation and Food Services	24,061	1,767
Professional, Scientific, and Technical Services	22,065	3,666
Manufacturing	20,936	876
Administrative and Support and Waste Management and Remediation Services	17,709	1,606
Other Services (except Public Administration)	17,212	9,058
Public Administration	14,642	108
Information	14,367	547
Transportation and Warehousing	9,491	411
Wholesale Trade	8,922	1,158
Real Estate and Rental and Leasing	7,256	1,367
Management of Companies and Enterprises	6,467	153
Arts, Entertainment, and Recreation	5,969	396
Utilities	2,607	43
Mining	1,384	24
Agriculture, Forestry, Fishing and Hunting	1,042	142
Not Classified	126	114
Grand Total	338,224	32,072

Contra Costa County Manufacturing Employment by Industry (2001-2004)



Contra Costa County Manufacturing Employment by Industry				
Description	Emp Mar-01	Emp Mar-02	Emp Mar-03	Emp Mar-04
Petroleum and Coal Products Manufacturing	6,681	6,954	6,927	6,496
Chemical Manufacturing	3,237	3,055	3,070	2,938
Computer and Electronic Product Manufacturing	3,524	2,674	2,300	2,605
Miscellaneous Manufacturing	1,040	1,098	1,126	1,638
Primary Metal Manufacturing	1,077	1,018	1,051	1,058
Food Manufacturing	1,113	984	1,026	990
Fabricated Metal Product Manufacturing	1,327	1,061	863	871
Printing and Related Support Activities	848	817	740	714
Nonmetallic Mineral Product Manufacturing	581	635	622	665
Machinery Manufacturing	666	637	557	599
Furniture and Related Product Manufacturing	569	517	476	496
Plastics and Rubber Products Manufacturing	575	523	439	492
Wood Product Manufacturing	326	400	306	335
Transportation Equipment Manufacturing	601	576	308	282
Paper Manufacturing	309	277	251	237
Electrical Equipment, Appliance, and Component Manufacturing	825	357	312	234
Apparel Manufacturing	137	145	141	143
Beverage and Tobacco Product Manufacturing	30	32	54	44
Textile Product Mills	66	55	49	43
Textile Mills	36	N/A	N/A	N/A
Leather and Allied Product Manufacturing		N/A	N/A	N/A
Grand Total	23,568	21,864	20,674	20,936

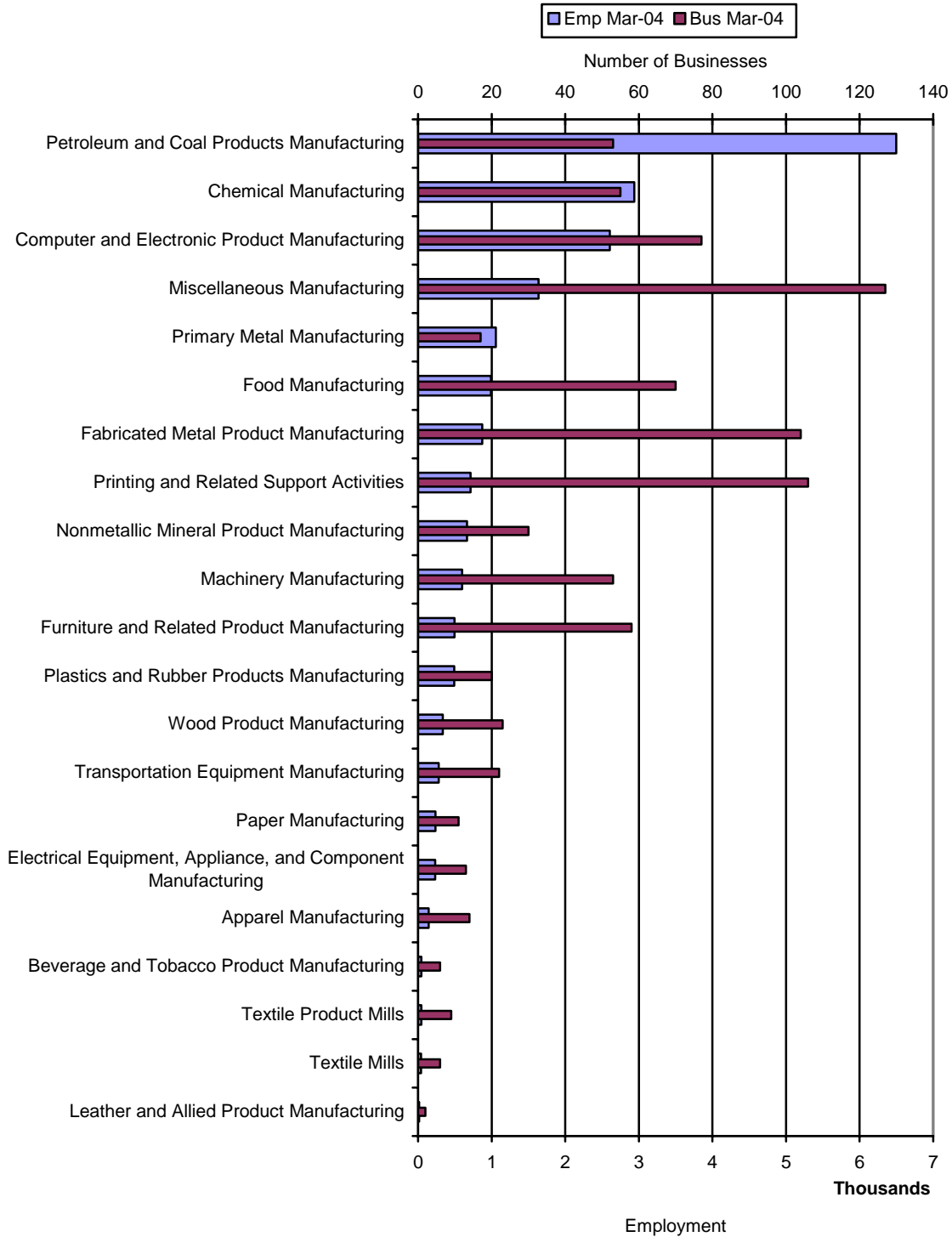
Contra Costa County Number of Manufacturing Businesses by Industry (2001-2004)



Contra Costa County Number of Manufacturing Businesses by Industry

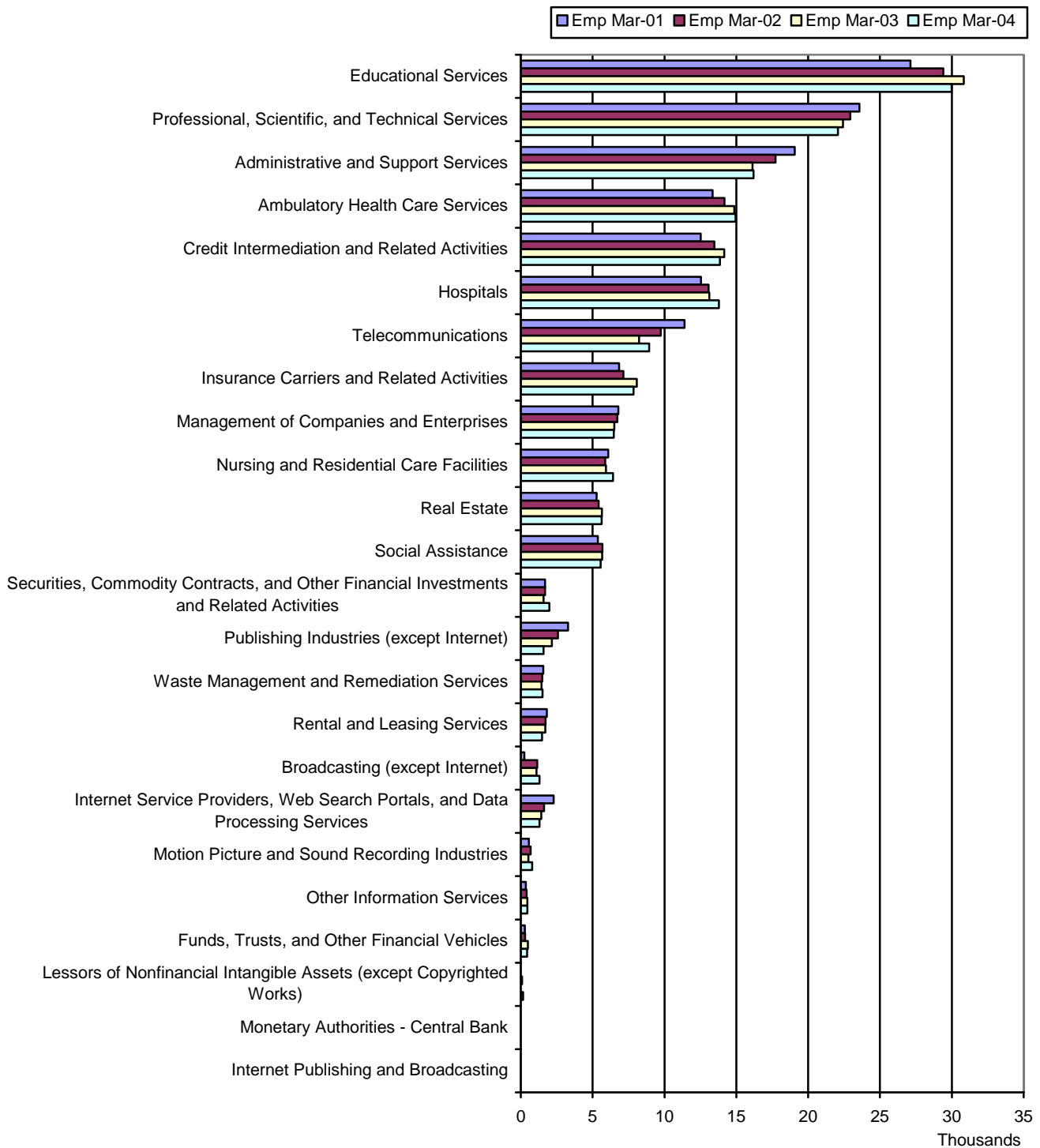
Description	Bus Mar-01	Bus Mar-02	Bus Mar-03	Bus Mar-04
Petroleum and Coal Products Manufacturing	34	38	42	53
Chemical Manufacturing	46	47	47	55
Computer and Electronic Product Manufacturing	71	72	70	77
Miscellaneous Manufacturing	118	115	118	127
Primary Metal Manufacturing	16	16	15	17
Food Manufacturing	57	56	60	70
Fabricated Metal Product Manufacturing	99	101	96	104
Printing and Related Support Activities	106	103	97	106
Nonmetallic Mineral Product Manufacturing	31	29	28	30
Machinery Manufacturing	46	45	49	53
Furniture and Related Product Manufacturing	52	55	49	58
Plastics and Rubber Products Manufacturing	18	20	16	20
Wood Product Manufacturing	23	21	22	23
Transportation Equipment Manufacturing	20	17	17	22
Paper Manufacturing	8	8	10	11
Electrical Equipment, Appliance, and Component Manufacturing	12	12	10	13
Apparel Manufacturing	9	13	12	14
Beverage and Tobacco Product Manufacturing	3	6	7	6
Textile Product Mills	11	11	8	9
Textile Mills	5	6	7	6
Leather and Allied Product Manufacturing	0	1	2	2
Grand Total	785	792	782	876

Contra Costa County Number of Manufacturing Businesses and Employment by Industry (2001-2004)



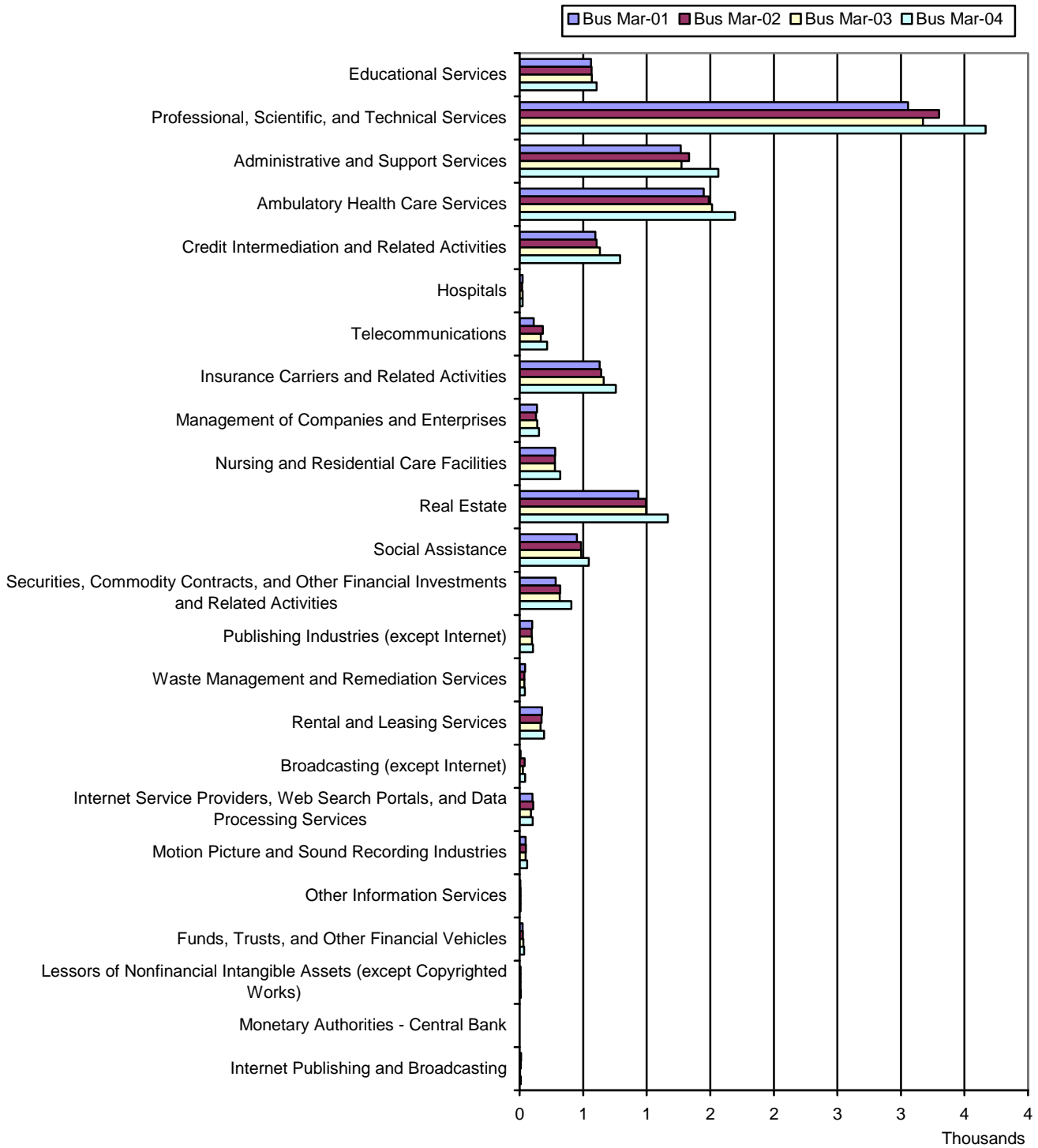
Contra Costa County Number of Manufacturing Businesses and Employment by Industry		
Description	Emp Mar-04	Bus Mar-04
Petroleum and Coal Products Manufacturing	6,496	53
Chemical Manufacturing	2,938	55
Computer and Electronic Product Manufacturing	2,605	77
Miscellaneous Manufacturing	1,638	127
Primary Metal Manufacturing	1,058	17
Food Manufacturing	990	70
Fabricated Metal Product Manufacturing	871	104
Printing and Related Support Activities	714	106
Nonmetallic Mineral Product Manufacturing	665	30
Machinery Manufacturing	599	53
Furniture and Related Product Manufacturing	496	58
Plastics and Rubber Products Manufacturing	492	20
Wood Product Manufacturing	335	23
Transportation Equipment Manufacturing	282	22
Paper Manufacturing	237	11
Electrical Equipment, Appliance, and Component Manufacturing	234	13
Apparel Manufacturing	143	14
Beverage and Tobacco Product Manufacturing	44	6
Textile Product Mills	43	9
Textile Mills	N/A	6
Leather and Allied Product Manufacturing	N/A	2
Grand Total	20,936	876

Contra Costa County Service Employment by Industry (2001-2004)



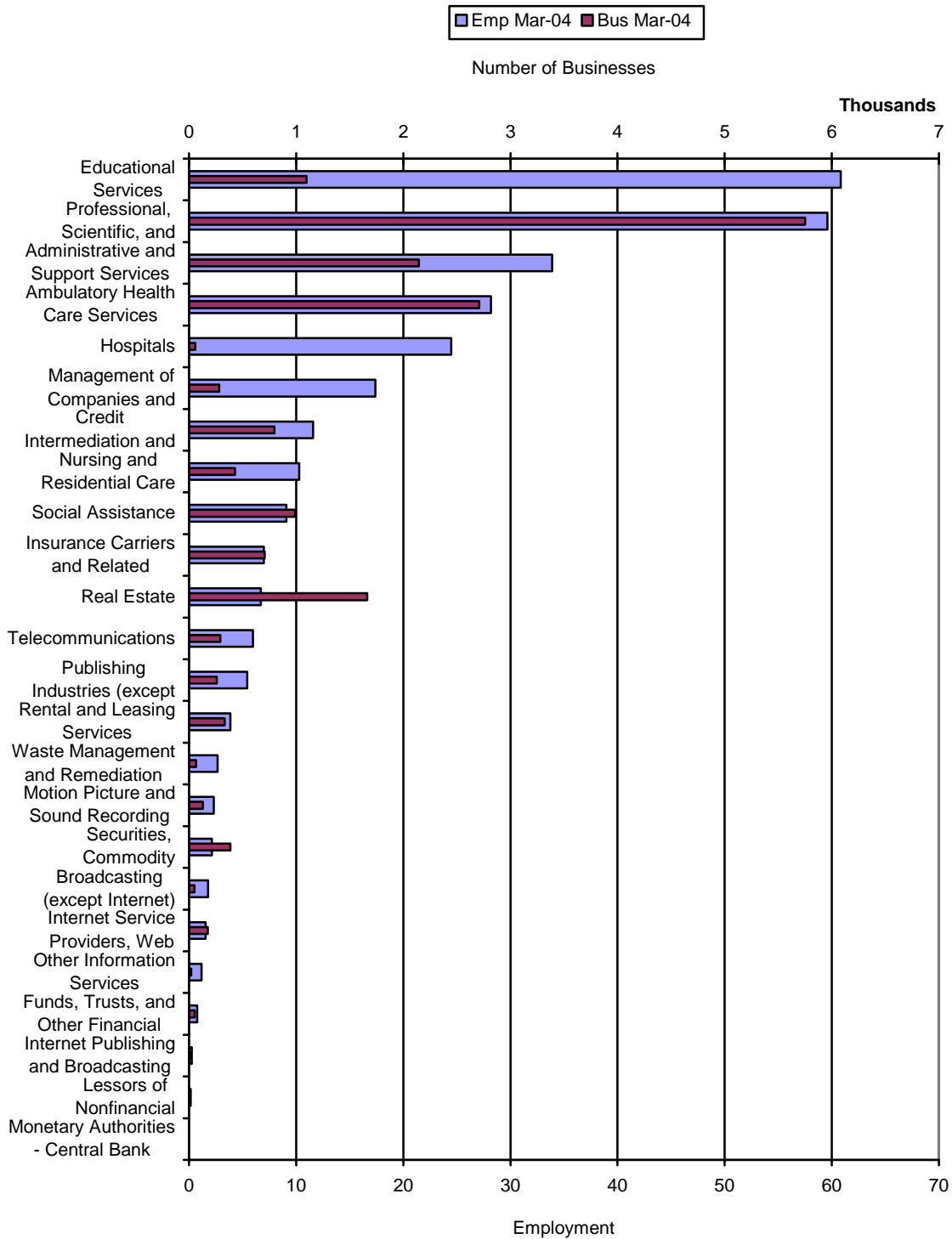
Contra Costa County Service Employment by Industry				
Description	Emp Mar-01	Emp Mar-02	Emp Mar-03	Emp Mar-04
Educational Services	27,123	29,409	30,825	29,993
Professional, Scientific, and Technical Services	23,568	22,941	22,426	22,065
Administrative and Support Services	19,061	17,722	16,136	16,196
Ambulatory Health Care Services	13,354	14,169	14,861	14,949
Credit Intermediation and Related Activities	12,522	13,471	14,158	13,866
Hospitals	12,548	13,075	13,123	13,784
Telecommunications	11,404	9,737	8,225	8,937
Insurance Carriers and Related Activities	6,833	7,147	8,071	7,852
Management of Companies and Enterprises	6,796	6,720	6,506	6,467
Nursing and Residential Care Facilities	6,079	5,877	5,919	6,412
Real Estate	5,277	5,413	5,646	5,628
Social Assistance	5,359	5,685	5,663	5,555
Securities, Commodity Contracts, and Other Financial Investments and Related Activities	1,690	1,689	1,576	1,993
Publishing Industries (except Internet)	3,295	2,583	2,164	1,585
Waste Management and Remediation Services	1,571	1,499	1,446	1,513
Rental and Leasing Services	1,807	1,725	1,710	1,476
Broadcasting (except Internet)	246	1,138	1,091	1,306
Internet Service Providers, Web Search Portals, and Data Processing Services	2,279	1,623	1,430	1,293
Motion Picture and Sound Recording Industries	555	692	524	783
Other Information Services	353	406	465	456
Funds, Trusts, and Other Financial Vehicles	276	302	484	448
Lessors of Nonfinancial Intangible Assets (except Copyrighted Works)	N/A	82	N/A	152
Monetary Authorities - Central Bank				N/A
Internet Publishing and Broadcasting	N/A	6	N/A	N/A
Grand Total	162,245	163,111	162,576	162,723

Contra Costa County Number of Service Businesses by Industry (2001-2004)



Contra Costa County Number of Service Businesses by Industry				
Description	Bus Mar-01	Bus Mar-02	Bus Mar-03	Bus Mar-04
Educational Services	562	567	569	607
Professional, Scientific, and Technical Services	3,056	3,301	3,173	3,666
Administrative and Support Services	1,268	1,333	1,273	1,564
Ambulatory Health Care Services	1,449	1,489	1,515	1,694
Credit Intermediation and Related Activities	596	606	631	790
Hospitals	23	20	23	24
Telecommunications	112	183	166	217
Insurance Carriers and Related Activities	629	641	662	757
Management of Companies and Enterprises	138	130	139	153
Nursing and Residential Care Facilities	280	279	278	319
Real Estate	933	993	996	1,166
Social Assistance	452	483	485	544
Securities, Commodity Contracts, and Other Financial Investments and Related Activities	284	320	316	407
Publishing Industries (except Internet)	99	96	97	106
Waste Management and Remediation Services	43	38	37	42
Rental and Leasing Services	177	173	165	192
Broadcasting (except Internet)	7	39	26	43
Internet Service Providers, Web Search Portals, and Data Processing Services	102	107	90	104
Motion Picture and Sound Recording Industries	47	50	48	59
Other Information Services	5	7	7	8
Funds, Trusts, and Other Financial Vehicles	24	26	29	35
Lessors of Nonfinancial Intangible Assets (except Copyrighted Works)	8	8	7	9
Monetary Authorities - Central Bank	0	0	0	1
Internet Publishing and Broadcasting	12	10	4	10
Grand Total	10,306	10,899	10,736	12,517

Contra Costa County Number of Service Businesses and Employment by Industry (2001-2004)



Contra Costa County Number of Service Businesses and Employment by Industry		
Description	Emp Mar-04	Bus Mar-04
Educational Services	29,993	607
Professional, Scientific, and Technical Services	22,065	3,666
Administrative and Support Services	16,196	1,564
Ambulatory Health Care Services	14,949	1,694
Credit Intermediation and Related Activities	13,866	790
Hospitals	13,784	24
Telecommunications	8,937	217
Insurance Carriers and Related Activities	7,852	757
Management of Companies and Enterprises	6,467	153
Nursing and Residential Care Facilities	6,412	319
Real Estate	5,628	1,166
Social Assistance	5,555	544
Securities, Commodity Contracts, and Other Financial Investments and Related Activities	1,993	407
Publishing Industries (except Internet)	1,585	106
Waste Management and Remediation Services	1,513	42
Rental and Leasing Services	1,476	192
Broadcasting (except Internet)	1,306	43
Internet Service Providers, Web Search Portals, and Data Processing Services	1,293	104
Motion Picture and Sound Recording Industries	783	59
Other Information Services	456	8
Funds, Trusts, and Other Financial Vehicles	448	35
Lessors of Nonfinancial Intangible Assets (except Copyrighted Works)	152	9
Monetary Authorities - Central Bank	N/A	1
Internet Publishing and Broadcasting	N/A	10
Grand Total	162,723	12,517